

AGRICULTURE HOSE, FITTINGS & ACCESSORIES

**NEW
PRODUCTS
INSIDE**



ORLANDO

4105 Seaboard Rd.
Orlando, FL 32808
(407) 843-8190
(800) 506-5514
Fax: (321) 800-5441

SOUTH ORLANDO

9961 Sidney Hayes Rd.
Orlando, FL 32824
(407) 843-8190
(800) 506-5514
Fax: (321) 800-5441

TAMPA

1103 N. 50th St.
Tampa, FL 33619
(813) 223-7554
(800) 664-9490
Fax: (813) 223-7567

MIAMI

1001 N.W. 159th Dr.
Miami Gardens, FL 33169
(305) 620-4313
(800) 731-0025
Fax: (305) 356-7308

RIVIERA BEACH

6753 Garden Rd. #109
Riviera Beach, FL 33404
(561) 844-3699
(800) 506-5514
Fax: (561) 844-4142

ABOUT US

Rubber hoses made back in the early 1900s were comprised of pure gum rubber tapped from the Amazonian trees, which often grow more than 100 feet high. The original source for most of this quality gum rubber was the Amazon River Basin of South America from which Amazon Hose & Rubber Founder Harry E. Jacoby adopted the name “Amazon.”

From the Chicago location, business grew to include expanded service and product distribution at locations in Miami and Tampa during the 1940s and early '50s. Surviving World War II, Amazon Hose & Rubber emerged with a broad range of hoses and tubing made of quality synthetic materials. Each location continues in the tradition of quality service and products — “an inch or a mile.”

In 1981, Amazon Hose & Rubber opened its Orlando location serving the growing Central Florida area with walk-in service. Each location maintains a comprehensive stock of hoses, tubing, fittings and couplings for industrial and hydraulic applications. In 2017, we expanded into South Orlando and opened the first Continental Hose Service Center. Our newest location in Riviera Beach was opened in 2021 to serve our clients in Palm Beach County.

Easy access to overnight ground and air shipping services allow Amazon Hose to provide quality service for North American clients from coast-to-coast, as well serving International clients.

Se Habla Español



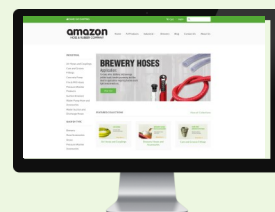
What is an Elite Distributor?

The Continental Hose Division has developed a Distributor Program recognizing their top distributors throughout North America. This program is called “Elite” and signifies the strong partnership that the distributor and Continental have to grow the markets we serve with the best brands. There are only 20 Elite Distributors out of 250 throughout North America, and Amazon Hose is currently the only Elite Distributor for both Industrial and Hydraulic Hose fabrication and sales.



WE SHIP WORLD-WIDE!

SHOP NOW



Order Online
at Shop.AmazonHose.com

TABLE OF CONTENTS

PUMP HOSE KITS.....	1
BULK HOSE.....	1
GREEN PVC SUCTION HOSE ASSEMBLIES.....	2
KANALINE STYLE FABRIC REINFORCED SUCTION HOSE.....	3
CONTINENTAL RUBBER WATER SUCTION HOSE ASSEMBLIES.....	3
BLUE PVC DISCHARGE HOSE ASSEMBLIES.....	4
RED PVC DISCHARGE HOSE ASSEMBLIES.....	4
NITRILE/PVC DISCHARGE HOSE ASSEMBLIES.....	5
SINGLE JACKET MILL HOSE (FIRE HOSE) ASSEMBLIES.....	5
BAUER STYLE BALL AND SOCKET FITTINGS.....	6
ALUMINUM AND POLYPROPYLENE CAM & GROOVE FITTINGS.....	7-8
RIVERSIDE TRASH PUMPS.....	9
RIVERSIDE AG PUMPS & DIAPHRAGM PUMPS.....	10
TSURUMI SUBMERSIBLE PUMPS.....	11-12
ACCESSORIES.....	13
SPRAY AND CHEMICAL HOSE.....	14
POLYETHYLENE TPE TUBING.....	15
EVA YARN-REINFORCED SPRAY HOSE.....	15
CLEAR PVC TUBING AND PVC DISCHARGE HOSE.....	16
AIR AND WATER HOSE.....	17
CONTINENTAL AIR HOSE ASSEMBLIES AND KING COUPLINGS.....	18
WORM GEAR CLAMPS.....	19
SNAPLOCK QUICK RELEASE CLAMPS.....	19
T-BOLT CLAMPS.....	19
CENTER PUNCH CLAMPS.....	20
J-SERIES OR JR. CLAMPS.....	20
ULTRA LOK® CLAMPS.....	20
BAND AND BUCKLE.....	20
CONTINENTAL HYDRAULIC HOSE.....	21
HYDRAULIC HOSE ENDS.....	21
HYDRAULIC QUICK DISCONNECT COUPLINGS.....	22
BVA® HYDRAULIC EQUIPMENT.....	22
HYDRAULIC OIL AND SPILL CONTAINMENT ACCESSORIES.....	22
PRESSURE WASHER WASHDOWN HOSE ASSEMBLIES.....	23
BANJO BALL VALVES.....	24
BANJO DRY-MATE COUPLINGS.....	25
BANJO FITTINGS AND ADAPTERS.....	26
BANJO PIPE ADAPTERS.....	27
BANJO PIPE ADAPTERS AND HOSE BARBS.....	28
BANJO LINE STRAINERS.....	29
BANJO LINE STRAINER REPLACEMENT PARTS.....	30
FILL-RITE TRANSFER PUMPS.....	31
BANJO CENTRIFUGAL PUMPS.....	31
DISPENSING NOZZLES.....	31
PETROLEUM TRANSFER AND DISPENSING HOSES.....	32
DRY AND LIQUID FILLED PRESSURE GAUGES.....	33
REELCRAFT HOSE REELS, CABLE REELS AND CORD REELS.....	33
FULL PORT BRASS BALL VALVES.....	34
200 PSI / WOG BRASS GATE AND SWING CHECK VALVES.....	34

PUMP HOSE KITS

HOSE KIT 1

Pump Hose Kit Female Camlock x Male Pipe Threaded Suction Hose

KIT INCLUDES:

- One 20 FT. Green PVC Suction Hose with Crimped Female Camlock x Male Pipe Threaded ends
- One 50 FT. Blue Discharge hose with Male x Female Camlocks
- Two Male Camlock Adapters
- One Strainer

SIZE	PART #
1-1/2"	HPK1 - 15
2"	HPK1 - 20
3"	HPK1 - 30
4"	HPK1 - 40
6"	HPK1 - 60



HOSE KIT 2

Pump Hose Kit Female x Male Pipe Threaded Suction Hose

KIT INCLUDES:

- One 20 FT. Green PVC Suction Hose with Male x Female Pipe Threaded ends
- One 50 FT. Blue PVC Discharge Hose with Male x Female Camlocks
- One Male Camlock Adapter
- One Strainer

SIZE	PART #
1-1/2"	HPK2 - 15
2"	HPK2 - 20
3"	HPK2 - 30
4"	HPK2 - 40
6"	HPK2 - 60

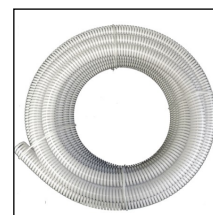


BULK HOSE

GREEN PVC SUCTION HOSE		PART #
1-1/2"	100 FT. ROLLS	HWPS1H
2"	100 FT. ROLLS	HWPS2
3"	100 FT. ROLLS	HWPS3
4"	100 FT. ROLLS	HWPS4
6"	20 FT. STICKS	HWPS6
6"	100 FT. ROLLS	HWPS6
8"	20 FT. STICKS	HWPS8

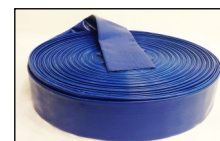


CLEAR x WHITE PVC SUCTION HOSE		PART #
1-1/2"	100 FT. ROLLS	HWPS1H
2"	100 FT. ROLLS	HWPS2



*** Call for additional sizes.**

BLUE PVC DISCHARGE HOSE		WORKING PRESURE RATINGS	PART #
1-1/2"	300 FT. ROLLS	80 PSI at 70° F	HWPB1H
2"	300 FT. ROLLS	80 PSI at 70° F	HWPB2
3"	300 FT. ROLLS	80 PSI at 70° F	HWPB3
4"	300 FT. ROLLS	70 PSI at 70° F	HWPB4
6"	300 FT. ROLLS	60 PSI at 70° F	HWPB6
8"	300 FT. ROLLS	35 PSI at 70° F	HWPB8

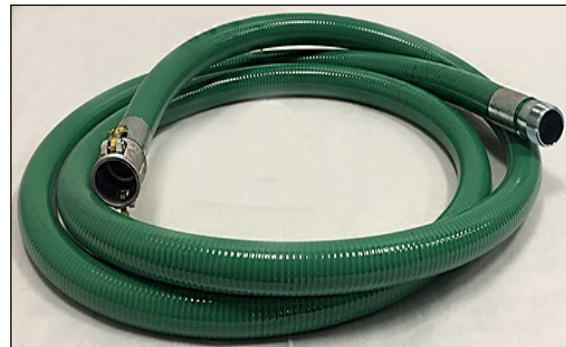


RED PVC DISCHARGE HOSE		WORKING PRESURE RATINGS	PART #
2"	300 FT. ROLLS	150 PSI at 70° F	JIWDR200
3"	300 FT. ROLLS	125 PSI at 70° F	JIWDR300
4"	300 FT. ROLLS	100 PSI at 70° F	JIWDR400
6"	300 FT. ROLLS	82 PSI at 70° F	JIWDR600
8"	300 FT. ROLLS	70 PSI at 70° F	JIWDR800



GREEN PVC SUCTION HOSE ASSEMBLIES

GREEN PVC SUCTION WITH CRIMPED FEMALE CAMLOCK x MALE PIPE THREADED			PART #
1-1/2"	x 20 FT.	INCLUDES CRIMPED FEMALE CAMLOCK x KING NIPPLE	CWS.1520CKN
2"	x 20 FT.	INCLUDES CRIMPED FEMALE CAMLOCK x KING NIPPLE	CWS.220CKN
3"	x 20 FT.	INCLUDES CRIMPED FEMALE CAMLOCK x KING NIPPLE	CWS.320CKN
4"	x 20 FT.	INCLUDES CRIMPED FEMALE CAMLOCK x KING NIPPLE	CWS.420CKN
6"	x 20 FT.	INCLUDES CRIMPED FEMALE CAMLOCK x KING NIPPLE	CWS.620CKN



GREEN PVC SUCTION WITH CRIMPED MALE x FEMALE CAMLOCKS			PART #
1-1/2"	x 20 FT.	INCLUDES CRIMPED MALE x FEMALE CAMLOCKS	CWS.1520CE
2"	x 20 FT.	INCLUDES CRIMPED MALE x FEMALE CAMLOCKS	CWS.220CE
3"	x 20 FT.	INCLUDES CRIMPED MALE x FEMALE CAMLOCKS	CWS.320CE
4"	x 20 FT.	INCLUDES CRIMPED MALE x FEMALE CAMLOCKS	CWS.420CE
6"	x 10 FT.	INCLUDES CRIMPED MALE x FEMALE CAMLOCKS	CWS.610CE
6"	x 20 FT.	INCLUDES CRIMPED MALE x FEMALE CAMLOCKS	CWS.620CE



GREEN PVC SUCTION WITH BANDED FEMALE x MALE PIPE THREADED			PART #
1-1/2"	x 20 FT.	INCLUDES BANDED MALE x FEMALE THREADED COUPLINGS	WS.1520WC
2"	x 20 FT.	INCLUDES BANDED MALE x FEMALE THREADED COUPLINGS	WS.220WC
3"	x 20 FT.	INCLUDES BANDED MALE x FEMALE THREADED COUPLINGS	WS.320WC
4"	x 20 FT.	INCLUDES BANDED MALE x FEMALE THREADED COUPLINGS	WS.420WC
6"	x 20 FT.	INCLUDES BANDED MALE x FEMALE THREADED COUPLINGS	WS.620WC



KANALINE STYLE FABRIC REINFORCED SUCTION HOSE

CLEAR WITH ORANGE HELIX WITH CRIMPED MALE x FEMALE BAUER STYLE FITTINGS			PART #
3"	x 20 FT.	SUCTION SERVICE ONLY	CWSC.320BF
4"	x 20 FT.	SUCTION SERVICE ONLY	CWSC.420BF
6"	x 20 FT.	SUCTION SERVICE ONLY	CWSC.620BF
8"	x 20 FT.	SUCTION SERVICE ONLY	CWSC.820BF



CLEAR WITH ORANGE HELIX WITH CRIMPED MALE x FEMALE CAMLOCKS			PART #
3"	x 20 FT.	SUCTION SERVICE ONLY	CWSC.320CE
4"	x 20 FT.	SUCTION SERVICE ONLY	CWSC.420CE
6"	x 20 FT.	SUCTION SERVICE ONLY	CWSC.620CE
8"	x 20 FT.	SUCTION SERVICE ONLY	CWSC.820CE



CONTINENTAL RUBBER WATER SUCTION HOSE ASSEMBLIES

RUBBER WATER SUCTION WITH FEMALE CAMLOCK x MALE PIPE THREADED			WORKING PRESSURE RATINGS	PART #
2"	x 20 FT.	INCLUDES CRIMPED FEMALE CAMLOCK x KING NIPPLE	150 PSI	CWSR.220CKN
3"	x 20 FT.	INCLUDES CRIMPED FEMALE CAMLOCK x KING NIPPLE	150 PSI	CWSR.320CKN
4"	x 20 FT.	INCLUDES CRIMPED FEMALE CAMLOCK x KING NIPPLE	150 PSI	CWSR.420CKN
6"	x 20 FT.	INCLUDES CRIMPED FEMALE CAMLOCK x KING NIPPLE	75 PSI	CWSR.620CKN



RUBBER WATER SUCTION WITH MALE x FEMALE CAMLOCKS			WORKING PRESSURE RATINGS	PART #
2"	x 20 FT.	INCLUDES CRIMPED MALE x FEMALE CAMLOCKS	150 PSI	CWSR.220CE
3"	x 20 FT.	INCLUDES CRIMPED MALE x FEMALE CAMLOCKS	150 PSI	CWSR.320CE
4"	x 20 FT.	INCLUDES CRIMPED MALE x FEMALE CAMLOCKS	150 PSI	CWSR.420CE
6"	x 20 FT.	INCLUDES CRIMPED MALE x FEMALE CAMLOCKS	75 PSI	CWSR.620CE



RUBBER WATER SUCTION WITH MALE x FEMALE BAUER STYLE FITTINGS			WORKING PRESSURE RATINGS	PART #
3"	x 20 FT.	INCLUDES CRIMPED MALE x FEMALE BAUER STYLE FITTINGS	150 PSI	CWSR.320BF
4"	x 20 FT.	INCLUDES CRIMPED MALE x FEMALE BAUER STYLE FITTINGS	150 PSI	CWSR.420BF
6"	x 20 FT.	INCLUDES CRIMPED MALE x FEMALE BAUER STYLE FITTINGS	75 PSI	CWSR.620BF
8"	x 20 FT.	INCLUDES CRIMPED MALE x FEMALE BAUER STYLE FITTINGS	75 PSI	CWSR.820BF



BLUE PVC DISCHARGE HOSE ASSEMBLIES

BLUE PVC DISCHARGE WITH BANDED FEMALE x MALE PIPE THREADED			WORKING PRESSURE RATINGS	PART #
1-1/2"	x 50 FT.	INCLUDES MALE x FEMALE THREADED COUPLINGS	75 PSI at 70° F	WD.1550WC
2"	x 50 FT.	INCLUDES MALE x FEMALE THREADED COUPLINGS	75 PSI at 70° F	WD.250WC
3"	x 50 FT.	INCLUDES MALE x FEMALE THREADED COUPLINGS	50 PSI at 70° F	WD.350WC
4"	x 50 FT.	INCLUDES MALE x FEMALE THREADED COUPLINGS	50 PSI at 70° F	WD.450WC
6"	x 50 FT.	INCLUDES MALE x FEMALE THREADED COUPLINGS	25 PSI at 70° F	WD.650WC



BLUE PVC DISCHARGE WITH BANDED MALE x FEMALE CAMLOCKS			WORKING PRESSURE RATINGS	PART #
1-1/2"	x 50 FT.	INCLUDES MALE x FEMALE CAMLOCKS	80 PSI at 70° F	WD.1550CE
2"	x 50 FT.	INCLUDES MALE x FEMALE CAMLOCKS	80 PSI at 70° F	WD.250CE
3"	x 50 FT.	INCLUDES MALE x FEMALE CAMLOCKS	80 PSI at 70° F	WD.350CE
4"	x 50 FT.	INCLUDES MALE x FEMALE CAMLOCKS	70 PSI at 70° F	WD.450CE
6"	x 50 FT.	INCLUDES MALE x FEMALE CAMLOCKS	60 PSI at 70° F	WD.650CE



RED PVC DISCHARGE HOSE ASSEMBLIES

RED PVC DISCHARGE WITH BANDED FEMALE x MALE PIPE THREADED			WORKING PRESSURE RATINGS	PART #
2"	x 50 FT.	MALE x FEMALE THREADED COUPLINGS	75 PSI at 70° F	WDR.250WC
3"	x 50 FT.	MALE x FEMALE THREADED COUPLINGS	50 PSI at 70° F	WDR.350WC
4"	x 50 FT.	MALE x FEMALE THREADED COUPLINGS	50 PSI at 70° F	WDR.450WC
6"	x 50 FT.	MALE x FEMALE THREADED COUPLINGS	25 PSI at 70° F	WDR.650WC



RED PVC DISCHARGE WITH BANDED MALE x FEMALE CAMLOCKS			WORKING PRESSURE RATINGS	PART #
2"	x 50 FT.	MALE x FEMALE CAMLOCKS	150 PSI at 70° F	WDR.250CE
3"	x 50 FT.	MALE x FEMALE CAMLOCKS	125 PSI at 70° F	WDR.350CE
4"	x 50 FT.	MALE x FEMALE CAMLOCKS	100 PSI at 70° F	WDR.450CE
6"	x 50 FT.	MALE x FEMALE CAMLOCKS	75 PSI at 70° F	WDR.650CE



RED PVC DISCHARGE WITH BANDED MALE x FEMALE BAUER FITTINGS			WORKING PRESSURE RATINGS	PART #
4"	x 50 FT.	MALE x FEMALE BAUER FITTINGS	100 PSI at 70° F	WDR.450BF
6"	x 50 FT.	MALE x FEMALE BAUER FITTINGS	75 PSI at 70° F	WDR.650BF
8"	x 50 FT.	MALE x FEMALE BAUER FITTINGS	50 PSI at 70° F	WDR.850BF



NITRILE/PVC DISCHARGE HOSE ASSEMBLIES

NITRILE/PVC DISCHARGE HOSE* WITH BANDED BAUER STYLE FITTINGS			WORKING PRESSURE RATINGS	PART #
4"	x 50 FT.	INCLUDES BANDED MALE x FEMALE BAUER STYLE FITTINGS	100 PSI at 70° F	WDB.450BF
6"	x 50 FT.	INCLUDES BANDED MALE x FEMALE BAUER STYLE FITTINGS	75 PSI at 70° F	WDB.650BF
8"	x 50 FT.	INCLUDES BANDED MALE x FEMALE BAUER STYLE FITTINGS	50 PSI at 70° F	WDB.850BF

*** Also available with Cam & Groove Ends.**



NITRILE/PVC DISCHARGE HOSE* WITH CRIMPED BAUER STYLE FITTINGS			WORKING PRESSURE RATINGS	PART #
4"	x 50 FT.	INCLUDES CRIMPED MALE x FEMALE BAUER STYLE FITTINGS	150 PSI at 70° F	CWDB.450BF
6"	x 50 FT.	INCLUDES CRIMPED MALE x FEMALE BAUER STYLE FITTINGS	150 PSI at 70° F	CWDB.650BF
8"	x 50 FT.	INCLUDES CRIMPED MALE x FEMALE BAUER STYLE FITTINGS	125 PSI at 70° F	CWDB.850BF

*** Also available with Cam & Groove Ends.**

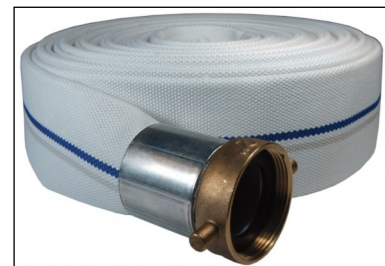


SINGLE JACKET MILL HOSE (FIRE HOSE) ASSEMBLIES

MILL DISCHARGE HOSE* WITH CRIMPED FEMALE x MALE PIPE THREADED			WORKING PRESSURE RATINGS	PART #
1-1/2"	x 50 FT.	INCLUDES MALE x FEMALE THREADED COUPLINGS	75 PSI^	CWDM.1550WC
2"	x 50 FT.	INCLUDES MALE x FEMALE THREADED COUPLINGS	75 PSI^	CWDM.250WC

*** Not for fire suppression applications.**

^ Hose ends reduce the rating to 75 PSI.



MILL DISCHARGE HOSE* WITH CRIMPED MALE x FEMALE CAMLOCKS			WORKING PRESSURE	PART #
1-1/2"	x 50 FT.	INCLUDES MALE x FEMALE CAMLOCKS	150 PSI	CWDM.1550CE
2"	x 50 FT.	INCLUDES MALE x FEMALE CAMLOCKS	150 PSI	CWDM.250CE

*** Not for fire suppression applications.**



BAUER STYLE BALL AND SOCKET FITTINGS

BAUER STYLE COUPLING SETS		PART #
3"	COUPLING SET—INCLUDES MALE x FEMALE HOSE ENDS, CLAMP RING & RUBBER O-RING	BAUER BS3
4"	COUPLING SET—INCLUDES MALE x FEMALE HOSE ENDS, CLAMP RING & RUBBER O-RING	BAUER BS4
6"	COUPLING SET—INCLUDES MALE x FEMALE HOSE ENDS, CLAMP RING & RUBBER O-RING	BAUER BS6
8"	COUPLING SET—INCLUDES MALE x FEMALE HOSE ENDS, CLAMP RING & RUBBER O-RING	BAUER BS8



BAUER STYLE COUPLING RUBBER O-RING		PART #
3"	RUBBER O-RING	BAUER S4 3 O-RING
4"	RUBBER O-RING	BAUER S4 4 O-RING
6"	RUBBER O-RING	BAUER S4 6 O-RING
8"	RUBBER O-RING	BAUER S4 8 O-RING



**BALL & LEVER x
FLANGE**



SOCKET x FLANGE



**BALL & LEVER x PIPE
LONG ADAPTER**



**BALL & LEVER x PIPE
STANDARD ADAPTER**



SOCKET x PIPE



DECEASER



INCREASER



90° ELBOW



Y-ADAPTER



**BALL & LEVER x
SHALLOW STRAINER**



PLUG



CAP



LEVER

ALUMINUM AND POLYPROPYLENE CAM & GROOVE FITTINGS

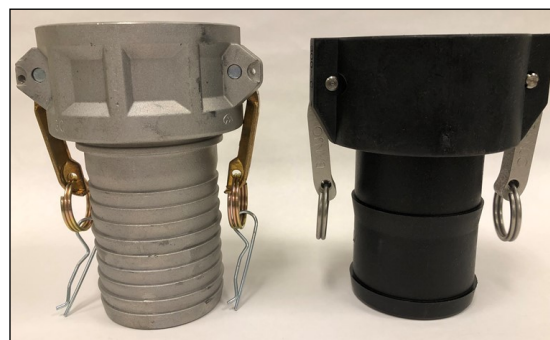
ADAPTER x FEMALE NPT*			(A) PART #	(P) PART #
PART A	3/4"	ADAPTER x FEMALE NPT	A075AL	A075PP
PART A	1"	ADAPTER x FEMALE NPT	A100AL	A100PP
PART A	1-1/2"	ADAPTER x FEMALE NPT	A150AL	A150PP
PART A	2"	ADAPTER x FEMALE NPT	A200AL	A200PP
PART A	3"	ADAPTER x FEMALE NPT	A300AL	A300PP
PART A	4"	ADAPTER x FEMALE NPT	A400AL	A400PP
PART A	6"	ADAPTER x FEMALE NPT	A600AL	N/A



COUPLER x MALE NPT*			(A) PART #	(P) PART #
PART B	3/4"	COUPLER x MALE NPT	B075AL	B075PP
PART B	1"	COUPLER x MALE NPT	B100AL	B100PP
PART B	1-1/2"	COUPLER x MALE NPT	B150AL	B150PP
PART B	2"	COUPLER x MALE NPT	B200AL	B200PP
PART B	3"	COUPLER x MALE NPT	B300AL	B300PP
PART B	4"	COUPLER x MALE NPT	B400AL	B400PP
PART B	6"	COUPLER x MALE NPT	B600AL	N/A



COUPLER x HOSE SHANK*			(A) PART #	(P) PART #
PART C	3/4"	COUPLER x HOSE SHANK	C075AL	C075PP
PART C	1"	COUPLER x HOSE SHANK	C100AL	C100PP
PART C	1-1/2"	COUPLER x HOSE SHANK	C150AL	C150PP
PART C	2"	COUPLER x HOSE SHANK	C200AL	C200PP
PART C	3"	COUPLER x HOSE SHANK	C300AL	C300PP
PART C	4"	COUPLER x HOSE SHANK	C400AL	C400PP
PART C	6"	COUPLER x HOSE SHANK	C600AL	N/A



COUPLER x FEMALE NPT*			(A) PART #	(P) PART #
PART D	3/4"	COUPLER x FEMALE NPT	D075AL	D075PP
PART D	1"	COUPLER x FEMALE NPT	D100AL	D100PP
PART D	1-1/2"	COUPLER x FEMALE NPT	D150AL	D150PP
PART D	2"	COUPLER x FEMALE NPT	D200AL	D200PP
PART D	3"	COUPLER x FEMALE NPT	D300AL	D300PP
PART D	4"	COUPLER x FEMALE NPT	D400AL	D400PP
PART D	6"	COUPLER x FEMALE NPT	D600AL	N/A



*** Call for additional sizes on all Cam & Groove Fittings.**

***Stainless Steel and Brass also available!**

ALUMINUM AND POLYPROPYLENE CAM & GROOVE FITTINGS

ADAPTER x HOSE SHANK*			(A) PART #	(P) PART #
PART E	3/4"	ADAPTER x HOSE SHANK	E075AL	E075PP
PART E	1"	ADAPTER x HOSE SHANK	E100AL	E100PP
PART E	1-1/2"	ADAPTER x HOSE SHANK	E150AL	E150PP
PART E	2"	ADAPTER x HOSE SHANK	E200AL	E200PP
PART E	3"	ADAPTER x HOSE SHANK	E300AL	E300PP
PART E	4"	ADAPTER x HOSE SHANK	E400AL	E400PP
PART E	6"	ADAPTER x HOSE SHANK	E600AL	N/A
ADAPTER x MALE NPT*			(A) PART #	(P) PART #
PART F	3/4"	ADAPTER x MALE NPT	F075AL	F075PP
PART F	1"	ADAPTER x MALE NPT	F100AL	F100PP
PART F	1-1/2"	ADAPTER x MALE NPT	F150AL	F150PP
PART F	2"	ADAPTER x MALE NPT	F200AL	F200PP
PART F	3"	ADAPTER x MALE NPT	F300AL	F300PP
PART F	4"	ADAPTER x MALE NPT	F400AL	F400PP
PART F	6"	ADAPTER x MALE NPT	F600AL	N/A
DUST CAP*			(A) PART #	(P) PART #
PART DC	3/4"	DUST CAP	DC075AL	DC075PP
PART DC	1"	DUST CAP	DC100AL	DC100PP
PART DC	1-1/2"	DUST CAP	DC150AL	DC150PP
PART DC	2"	DUST CAP	DC200AL	DC200PP
PART DC	3"	DUST CAP	DC300AL	DC300PP
PART DC	4"	DUST CAP	DC400AL	DC400PP
PART DC	6"	DUST CAP	DC600AL	N/A
DUST PLUG*			(A) PART #	(P) PART #
PART DP	3/4"	DUST PLUG	DP075AL	DP075PP
PART DP	1"	DUST PLUG	DP100AL	DP100PP
PART DP	1-1/2"	DUST PLUG	DP150AL	DP150PP
PART DP	2"	DUST PLUG	DP200AL	DP200PP
PART DP	3"	DUST PLUG	DP300AL	DP300PP
PART DP	4"	DUST PLUG	DP400AL	DP400PP
PART DP	6"	DUST PLUG	DP600AL	N/A
CAMLOCK GASKETS*		BUNA PART #	EPDM PART #	VITON PART #
SIZE	3/4"	G075BU	G075EP	G075VI
SIZE	1"	G100BU	G100EP	G100VI
SIZE	1-1/2"	G150BU	G150EP	G150VI
SIZE	2"	G200BU	G200EP	G200VI
SIZE	3"	G300BU	G300EP	G300VI
SIZE	4"	G400BU	G400EP	G400VI
SIZE	6"	G600BU	N/A	N/A



RIVERSIDE TRASH PUMPS

**NEW
COLLECTION**

Trash Pumps are used on construction sites for their ability to pump water containing foreign material. Riverside Pumps' rugged and reliable Diaphragm Pumps are sometimes called "mud hogs" for their ability to pump heavy mud and sludge, thicker than any centrifugal pump can handle. In any situation, we've got you covered!

Features:

- Cast Iron Impeller Housing and Impeller, 2-vane impeller design for wide solids passage.
- More HEAD than the competition, allows for greater pumping distance & pressure.
- A TRUE trash pump, passing half its port size in solids.
- Rugged 1" diameter steel powder-coated roll cage, most competitor use a 5/8" thin walled cage.
- 173 GPM, 25' of lift, 108' of total head.
- Honda GX160 engine.

**STOCK
ITEM**

RS TP2H



Features:

- Cast Iron Impeller, Volute & Wear Plate, easy to change.
- 6 point mounted vibrations isolators.
- A TRUE trash pump, passing half its port size in solids.
- Rugged 1" diameter steel powder-coated roll cage, most competitor use a 5/8" thin walled cage.
- 328 GPM, 25' of lift, 93' of total head.
- Honda GX240 engine.

**STOCK
ITEM**

RS TP3H



Features:

- Cast Iron Impeller, Impeller Housing & Wear Plate.
- Directional discharge fittings.
- A TRUE trash pump, passing half its port size in solids.
- Rugged 1.25" diameter steel powder-coated roll cage with 2 pneumatic wheels.
- 662 GPM, 25' of lift, 115' of total head.
- 16 HP Briggs & Stratton Vanguard engine.

**STOCK
ITEM**

RS TP4V

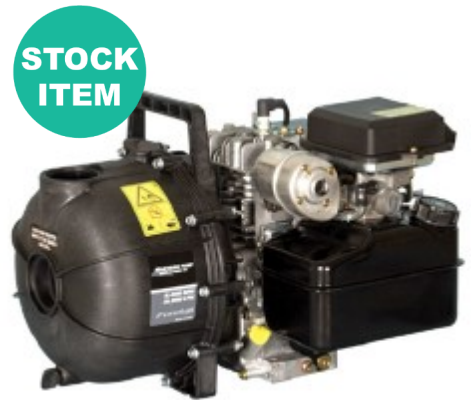


RIVERSIDE AG PUMPS & DIAPHRAGM PUMPS

Features:

- Light weight inexpensive transfer pump.
- Corrosion resistant thermoplastic material, ideal for saltwater and chemicals.
- Available with EPDM seals, BUNA-N and Viton seals are optional.
- 3.5 HP Briggs & Stratton engine.
- Large handle for easy carrying.
- RS AP22B delivers 140 GPM with 110' of head.

RS AP22B



** Also available with a Honda engine.*

Features:

- Neoprene Rubber Elastomer with Waven Nylon Core
- One-Piece X-Cross Section Aluminum with Twin Needle Bearings
- Thick Sand Cast Aluminum Construction.
- Rugged 1" Diameter Steel, Powder Coated Roll Cage.
- RS DP2H (2") Delivers 33 GPM and 50' Max head.
- RS DP3H (3") Delivers 80 GPM and 50' Max head.
- Honda GX160 engine.

RS DP2H (2")

RS DP3H (3")



DOLLY KIT & ROLL CAGE KIT

Universal Dolly Kit

Makes it even easier to move Riverside Pumps around the work site. Includes handles, two axles for correct fit, large wheels to move through mud, and all required hardware.



RS A15043

Ag Pump Roll Cage Kit

Rugged construction. Fits AP pump models. Includes hardware.



RS A15141

**NEW
COLLECTION**

TSURUMI SUBMERSIBLE PUMPS

We're now a proud distributor for the world leader of submersible pumps to the construction and rental market, Tsurumi outlasts the competition in pump life, product offering and cost savings.



**NEW
COLLECTION**

SINGLE PHASE SUBMERSIBLE PUMPS	DESCRIPTION
HS Series	Submersible pump designed for water, wastewater and light slurry pumping. Residential, commercial, industrial & construction dewatering applications.
LB Series	Rugged dewatering pumps built to fit into 8" pipes in 2/3HP, 1HP, and 2HP.
LSC Series	Low level residue pump capable of pumping water continuously at 1/16 inches.
LSR Series	Low level high volume residue pump capable of pumping down to 1/4 inches.
NK Series	Contractor pumps for high volume single phase dewatering applications.
Utility Series	With an air filled motor, these lightweight pumps are suitable for all your general dewatering applications.
UT/UTZ Series	Prevents clogging by solids and fibrous materials through the use of a vortex impeller and wide passage.
THREE PHASE SUBMERSIBLE PUMPS	DESCRIPTION
LBT Series	Rugged dewatering pumps built to fit into 8" pipes in 1HP and 2HP.
KTZ/KTZE Series	Construction pumps capable of converting from high head to high volume in 2HP -15HP designs.
LH Series	High head pumps providing medium to high flows. Ideal for generating plants and mining operations.
LHW Series	Rental & supply companies preferred choice for contractor ready slimline products.

TSURUMI SUBMERSIBLE PUMPS

HS2.4S Manual Electric Submersible Pump

Durable trash pumps in 2 inches discharge & 1/2HP. Designed to pump water containing sand, solids and debris with minimal wear and clogging.

- Built-in shaft mounted agitator suspends solids.
- Urethane Semi Vortex Impeller for maximum durability and pump performance.
- Dual inside mechanical seal with SiC faces for longer life.
- Oil Lifter provides lubrication of the seal faces. (Patented)
- V-Ring Seal design protects mechanical seal from abrasive particles.

Technical Specifications:

- | | |
|---------------------------|--|
| • Motor Output (HP): 1/2 | • Cable Length (ft.): 20 |
| • Phase: Single | • Dimension (Dia x H, in.): 10-1/16 x 12-15/16 |
| • Discharge Bore (in.): 2 | • Continuous Running Water Level (in.): 3.5 |
| • Voltage/Amp: 110/5.4 | • Pump Weight (lbs.): 30 |

**STOCK
ITEM**



HS2.4S

HS3.75S Manual Electric Submersible Pump

Durable trash pumps in 3 inches discharge & 1HP. Designed to pump water containing sand, solids and debris with minimal wear and clogging.

- Built-in shaft mounted agitator suspends solids.
- Urethane Semi Vortex Impeller for maximum durability and pump performance.
- Dual inside mechanical seal with SiC faces for longer life.
- Oil Lifter provides lubrication of the seal faces. (Patented)
- V-Ring Seal design protects mechanical seal from abrasive particles.

Technical Specifications:

- | | |
|---------------------------|--|
| • Motor Output (HP): 1 | • Cable Length (ft.): 32 |
| • Phase: Single | • Dimension (Dia x H, in.): 12-7/16 x 15-1/4 |
| • Discharge Bore (in.): 3 | • Continuous Running Water Level (in.): 3.5 |
| • Voltage/Amp: 115/9.6 | • Pump Weight (lbs.): 49 |

**STOCK
ITEM**



HS3.75S

LB-480 Manual Electric Submersible Pump

LB-480 Slimline design pump allows to fit into 8" pipes. Powerful pumps built with durable materials in an easy handling design. Top discharge provides maximum motor cooling efficiency allowing continuous duty operation at low water levels and extended dry-run capability.

- Urethane, Semi Vortex Impeller and Wear Plates for maximum durability and maintaining pump performance.
- Dual Inside Mechanical Seal With SiC faces provides longer operational life.
- Oil Lifter provides lubrication of the seal faces. (Patented)
- V-Ring Seal design protects mechanical seal from abrasive particles. (Optional Accessories)
- TS-301 Float Switch for automatic operation.

Technical Specifications:

- | | |
|---------------------------|--|
| • Motor Output (HP): 2/3 | • Cable Length (ft.): 32 |
| • Phase: Single | • Dimension (Dia x H, in.): 7-11/16 x 11-1/4 |
| • Discharge Bore (in.): 2 | • Continuous Running Water Level (in.): 2 |
| • Voltage/Amp: 110/6.1 | • Pump Weight (lbs.): 28 |

**STOCK
ITEM**



LB480



Float switch available upon request for most pumps.

**NEW
COLLECTION**

ACCESSORIES

SUCTION STRAINERS—GALVANIZED STEEL		PART #
1-1/2"	ROUND HOLE STRAINERS	RHS20
2"	ROUND HOLE STRAINERS	RHS25
3"	ROUND HOLE STRAINERS	RHS35
4"	ROUND HOLE STRAINERS	RHS40
6"	ROUND HOLE STRAINERS	RHS60
8"	ROUND HOLE STRAINERS	RHS80



SUCTION STRAINERS—GALVANIZED STEEL		PART #
1-1/2"	LONG STYLE STRAINERS	RSS20
2"	LONG STYLE STRAINERS	RSS25
3"	LONG STYLE STRAINERS	RSS35
4"	LONG STYLE STRAINERS	RSS40
6"	LONG STYLE STRAINERS	RSS60
8"	LONG STYLE STRAINERS	RSS80



SUCTION STRAINERS—GALVANIZED STEEL		PART #
1-1/2"	SQUARE HOLE STRAINERS	SHS20
2"	SQUARE HOLE STRAINERS	SHS25
3"	SQUARE HOLE STRAINERS	SHS35
4"	SQUARE HOLE STRAINERS	SHS40
6"	SQUARE HOLE STRAINERS	SHS60
8"	SQUARE HOLE STRAINERS	SHS80



FOOT VALVE WITH STRAINER		PART #
1-1/2"	FOOT VALVE WITH STRAINER	DFVS20
2"	FOOT VALVE WITH STRAINER	DFVS25
3"	FOOT VALVE WITH STRAINER	DFVS35
4"	FOOT VALVE WITH STRAINER	DFVS40
6"	FOOT VALVE WITH STRAINER	DFVS60



*** Call for additional sizes.**

PUMP DIAPHRAGMS		PART #
3"	RED NATURAL RUBBER DIAPHRAGM FOR MUD HOG PUMP	3RED PUMP
4"	RED NATURAL RUBBER DIAPHRAGM FOR MUD HOG PUMP	4RED PUMP



HEADER SLEEVES		PART #
6-5/8"	HEADER SLEEVE FOR WELLPOINTING	HEADER SLEEVE 6-5/8
8-5/8"	HEADER SLEEVE FOR WELLPOINTING	HEADER SLEEVE 8-5/8



SPRAY AND CHEMICAL HOSE

AG SPRAY 570 PSI HOSE—YELLOW

SIZE	STANDARD LENGTHS	WORKING PRESSURE RATINGS	TEMPERATURE	PART #
3/8"	300 / 400	570 PSI	130	HSA600FY
1/2"	300 / 400	570 PSI	130	HSA600HY
5/8"	300	570 PSI	130	HSA600JY
3/4"	300	570 PSI	130	HSA600LY



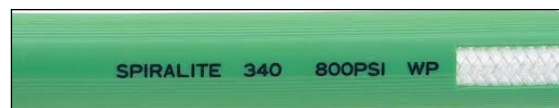
AG SPRAY 560 PSI HOSE—ORANGE

SIZE	STANDARD LENGTHS	WORKING PRESSURE RATINGS	TEMPERATURE	PART #
3/8"	300 / 400	560 PSI	130	HSA600F
1/2"	300 / 400	560 PSI	130	HSA600H
5/8"	300	560 PSI	130	HSA600J
3/4"	300	560 PSI	130	HSA600L



AG SPRAY 800 PSI HOSE—GREEN

SIZE	STANDARD LENGTHS	WORKING PRESSURE RATINGS	TEMPERATURE	PART #
3/8"	300	800 PSI	130	HSA800F
1/2"	300	800 PSI	130	HSA800H
3/4"	300	800 PSI	130	HSA800L



NR SPRAY HOSE—BLACK

SIZE	STANDARD LENGTHS	WORKING PRESSURE RATINGS	TEMPERATURE	PART #
1/4"	500 Ft. Reels or Custom Cut Lengths	750 PSI	190	HSNRD
3/8"	500 Ft. Reels or Custom Cut Lengths	750 PSI	190	HSNRF
1/2"	500 Ft. Reels or Custom Cut Lengths	750 PSI	190	HSNRH
3/4"	500 Ft. Reels or Custom Cut Lengths	750 PSI	190	HSNRL
1"	500 Ft. Reels or Custom Cut Lengths	750 PSI	190	HSNR1

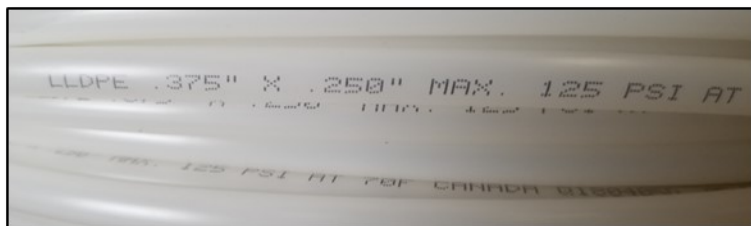


GREEN XPLE CHEMICAL TRANSFER HOSE

SIZE	STANDARD LENGTHS	WORKING PRESSURE RATINGS	TEMPERATURE	PART #
1"	100 Ft. Rolls or Custom Cut Lengths	150 PSI	150	HCXL1
1-1/4"	100 Ft. Rolls or Custom Cut Lengths	150 PSI	150	HCXL1D
1-1/2"	100 Ft. Rolls or Custom Cut Lengths	150 PSI	150	HCXL1H
2"	100 Ft. Rolls or Custom Cut Lengths	150 PSI	150	HCXL2
3"	100 Ft. Rolls or Custom Cut Lengths	150 PSI	150	HCXL3



POLYETHYLENE TPE TUBING



LLDPE Food Grade Tubing for Standard Industrial applications.

Construction:

- Linear low density food grade polyethylene tubing in compliance with FDA requirements - natural color. Also in compliance with RoHS requirements

Features:

- Economical and lightweight
- LLDPE resin provides excellent environmental stress crack resistance
- Natural color
- Excellent resistance to solvents
- Chemically inert
- Phthalate Free!

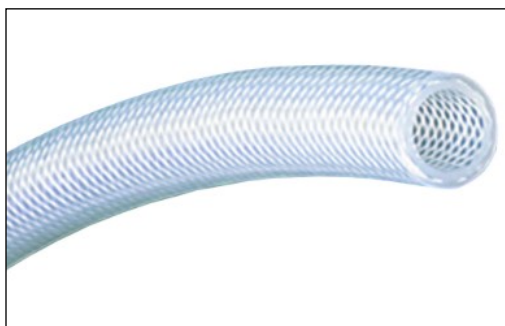
Applications:

- Transfer of air and liquids in industrial applications
- Water lines
- Water softener lines
- Pneumatic logic control lines

Service Temperature Range: -50°F (-45°C) to +140°F (+60°C)

SIZE ID x OD	STANDARD LENGTHS	WORKING PRESSURE RATINGS	TEMPERATURE	PART #
.170" x 1/4"	100 Ft. Reels	140 PSI	140	TPE1NA100
.170" x 1/4"	500 Ft. Reels	140 PSI	140	TPE1NA500
1/8" x 1/4"	100 Ft. Reels	150 PSI	140	TPE2NA100
1/8" x 1/4"	500 Ft. Reels	150 PSI	140	TPE2NA500
1/4" x 3/8"	100 Ft. Reels	125 PSI	140	TPE6NA100
1/4" x 3/8"	500 Ft. Reels	125 PSI	140	TPE6NA500
3/8" x 1/2"	100 Ft. Reels	100 PSI	140	TPE12NA100
3/8" x 1/2"	500 Ft. Reels	100 PSI	140	TPE12NA500
1/2" x 5/8"	100 Ft. Reels	75 PSI	140	TPE18NA100
1/2" x 5/8"	500 Ft. Reels	75 PSI	140	TPE18NA500

EVA YARN-REINFORCED SPRAY HOSE



A yarn reinforced EVA hose suitable for low pressure spraying and transfer of agricultural chemicals.

Construction:

- Tube—Translucent EVA copolymer
- Reinforcement—High tensile strength yarn
- Cover—Translucent EVA copolymer

Features:

- Highly flexible
- Higher working pressures than non-reinforced EVA tubing
- Excellent low temperature flexibility
- Excellent chemical-resistance
- Silicone-free
- One-piece lengths
- RoHS(16) compliant
- Phthalate Free!

Applications:

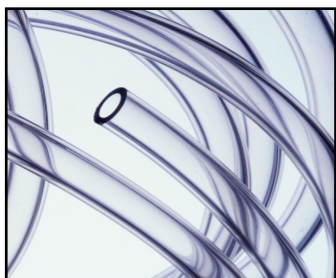
- Agricultural spray applications, including anhydrous ammonia fertilizer
- Low pressure lawn spray
- Low pressure transfer of liquids and gases, including chemicals

Service Temperature Range: -30°F (-35°C) to +150°F (+65°C)

PART #	SIZE	LENGTHS
K4350-06	3/8"	300 / 500 Ft. Rolls
K4350-08	1/2"	300 / 500 Ft. Rolls
K4350-12	3/4"	300 Ft. Rolls
K4350-16	1"	200 Ft. Rolls

CLEAR PVC TUBING AND PVC DISCHARGE HOSE

Clear PVC Tubing Unreinforced



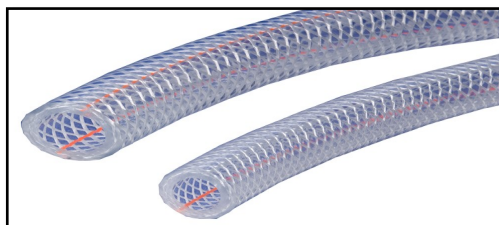
- Resistant to oxidation, chemicals and bacteria.
- Extreme flexibility permits easy set-ups.
- Flushes clean with most conventional cleaners and sanitizers.
- Can be used with a variety of fittings.
- RNT conforms to critical industry standards, having been approved by FDA, USDA, USP Class VI, NSF, 3A and UL.
- Beverage/Bottling and Service.
- Food Processing.

Sold in box quantities.

PART #	BOX QTY	SIZE ID x OD
TRNTS1AX500	500 FT.	1/16" x 1/8"
TRNT1X200	200 FT.	.120" x .170"
TRNT2X100	100 FT.	1/8" x 1/4"
TRNT3X100	100 FT.	3/16" x 5/16"
TRNT4X100	100 FT.	3/16" x 3/8"

** Call for additional sizes.*

Clear Braid K3150 Series RF Standard Wall PVC Food and Beverage Hose



A lightweight, standard wall, crystal clear yarn reinforced hose suitable for a wide variety of food and beverage applications.

- **3A** – The PVC compound complies with the criteria in 3-A Sanitary Standards for Multiple-Use Plastic Materials, number 20.
- **FDA** – The PVC ingredients used are sanctioned for food contact use under CFR title 21, parts 170-199.
- **NSF** – This hose is certified under NSF/ANSI standard 51: Food Equipment Materials.
- **RoHS** – The product complies with the requirements of the EU directive 2002/95/EC which is on the restriction of the use of certain hazardous substances in electrical and electronic equipment.
- **UL** – The clear PVC plastic material is certified for Flame Class HB under the Plastics Components category by UL with a minimum thickness of 0.8 mm.
- **USDA** – The PVC hose has been found chemically acceptable for use in slaughtering, processing, transporting or storage areas in direct contact with meat or poultry food product prepared under Federal Inspection.
- **USP** – The PVC compound has been tested and meets the requirements of the USP guidelines, for Class VI Plastics.

Amazon Hose will cut hose to your exact size requirements.

PART #	SIZE
HFCBHB	1/8" ID
HFCBSC	3/16" ID
HFCBSD	1/4" ID
HFCBSE	5/16" ID
HFCBSF	3/8" ID
HFCBSH	1/2" ID
HFCBSJ	5/8" ID
HFCBSL	3/4" ID
HFCBS1	1" ID
HFCBH1D	1-1/4" ID
HFCBH1H	1-1/2" ID
HFCBH2	2" ID

AIR AND WATER HOSE

RED GENERAL SERVICE FRONTIER AIR/WATER HOSE				
SIZE	STANDARD LENGTHS	WORKING PRESSURE RATINGS	TEMPERATURE	PART #
1/4"	500 Ft. Reels or Custom Cut Lengths	200 PSI	190	HARGD200
3/8"	500 Ft. Reels or Custom Cut Lengths	200 PSI	190	HARGF200
1/2"	500 Ft. Reels or Custom Cut Lengths	200 PSI	190	HARGH200
5/8"	500 Ft. Reels or Custom Cut Lengths	200 PSI	190	HARGJ200
3/4"	500 Ft. Reels or Custom Cut Lengths	200 PSI	190	HARGL200
1"	450 Ft. Reels or Custom Cut Lengths	200 PSI	190	HARG1200
1-1/4"	400 Ft. Reels or Custom Cut Lengths	200 PSI	190	HARG1D200
1-1/2"	300 Ft. Reels or Custom Cut Lengths	200 PSI	190	HARG1H200
2"	200 Ft. Rolls or Custom Cut Lengths	200 PSI	190	HARG2200

***Also available in black.**



RED VARIFLEX OIL-RESISTANT AIR/WATER HOSE				
SIZE	STANDARD LENGTHS	WORKING PRESSURE RATINGS	TEMPERATURE	PART #
1/4"	500 Ft. Reels or Custom Cut Lengths	300 PSI	190	HAORD
3/8"	500 Ft. Reels or Custom Cut Lengths	300 PSI	190	HAORF
1/2"	500 Ft. Reels or Custom Cut Lengths	300 PSI	190	HAORH
5/8"	500 Ft. Reels or Custom Cut Lengths	300 PSI	190	HAORJ
3/4"	500 Ft. Reels or Custom Cut Lengths	300 PSI	190	HAORL
1"	450 Ft. Reels or Custom Cut Lengths	300 PSI	190	HAOR1
1-1/4"	400 Ft. Reels or Custom Cut Lengths	250 PSI	190	HAOR1D
1-1/2"	300 Ft. Reels or Custom Cut Lengths	250 PSI	190	HAOR1H



BLUE PLIOVIC PVC AIR/WATER HOSE				
SIZE	STANDARD LENGTHS	WORKING PRESSURE RATINGS	TEMPERATURE	PART #
1/4"	750 Ft. Reels or Custom Cut Lengths	250 PSI	150	HAPBD
3/8"	750 Ft. Reels or Custom Cut Lengths	250 PSI	150	HAPBF
1/2"	750 Ft. Reels or Custom Cut Lengths	250 PSI	150	HAPBH
5/8"	500 Ft. Reels or Custom Cut Lengths	250 PSI	150	HAPBJ
3/4"	450 Ft. Reels or Custom Cut Lengths	250 PSI	150	HAPBL
1"	400 Ft. Reels or Custom Cut Lengths	200 PSI	150	HAPB1



CONTINENTAL AIR HOSE ASSEMBLIES AND KING COUPLINGS

CONTRACTOR AIR HOSE—STANDARD	PART #
3/4" x 50 FT. RED 300 PSI STANDARD GRADE . CONTINENTAL JACKHAMMER AIR HOSE. CRIMPED WITH AIR KING COUPLINGS. MADE IN USA. Custom lengths also available.	3/4X50FT. CONTRACTOR AIR



AIR KING UNIVERSAL		PART #
1/2"	MALE NPT	AM2
3/4"	MALE NPT	AM7
1"	MALE NPT	AM12
1/2"	FEMALE NPT	AM3
3/4"	FEMALE NPT	AM8
1"	FEMALE NPT	AM13
N/A	TRIPLE UNION CONNECTOR	AM10
25 Pack	SAFETY CLIPS	AC1
50 Pack	HOSE GASKETS	AWR4



**MALE
NPT**



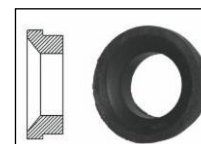
**FEMALE
NPT**



**TRIPLE UNION
CONNECTOR**



SAFETY CLIP



HOSE GASKET

SHOP AIR HOSE	PART #
3/8" x 50 FT. BLUE 300 PSI CONTINENTAL FRONTIER AIR HOSE WITH 1/4" MALE NPT ENDS. MADE IN USA.	A.3850MP BLUE
3/8" x 50 FT. BLUE 300 PSI CONTINENTAL AIR HOSE WITH 1/4" MALE NPT ENDS AND QUICK DISCONNECTS. MADE IN USA.	A.3850MP BLUE.QD



**WITHOUT QUICK
DISCONNECTS**



**WITH QUICK
DISCONNECTS**

SHOP AIR HOSE QUICK DISCONNECTS	PART #
1/4" FEMALE QUICK DISCONNECT SOCKET x FEMALE PIPE	3003
1/4" MALE QUICK DISCONNECT SOCKET x FEMALE PIPE	11-3
1/4" MALE QUICK DISCONNECT SOCKET x MALE PIPE	10-3



3003



11-3



10-3

ACCESSORIES	SERVICES
SHEET RUBBER	HOSE TESTING
GASKETS	HOSE REPAIR
ZIP TIES	VENDOR MANAGED INVENTORY
THREAD TAPE	CUSTOM ASSEMBLIES
THREAD SEALANT	
TREE TIE HOSE	

WORM GEAR CLAMPS

WORM GEAR CLAMPS* SOLD IN BOX OF 10			PART #	WORM GEAR CLAMPS* SOLD IN BOX OF 10			PART #
1/2" to 1-1/16"	SERIES 9/16" HY-GEAR 63-4		6310	1" to 4"	SERIES 9/16" HY-GEAR 63-4		6340
1/2" to 1-1/4"	SERIES 9/16" HY-GEAR 63-4		6312	1-3/4" to 3-3/4"	SERIES 9/16" HY-GEAR 63-4		6352
3/4" to 1-1/2"	SERIES 9/16" HY-GEAR 63-4		6316	2-1/2" to 4-1/2"	SERIES 9/16" HY-GEAR 63-4		6364
3/4" to 1-3/4"	SERIES 9/16" HY-GEAR 63-4		6320	3" to 5"	SERIES 9/16" HY-GEAR 63-4		6372
1" to 2"	SERIES 9/16" HY-GEAR 63-4		6324	3-5/8" to 5-1/2"	SERIES 9/16" HY-GEAR 63-4		6380
1-5/16" to 2-1/4"	SERIES 9/16" HY-GEAR 63-4		6328	4-1/2" to 6"	SERIES 9/16" HY-GEAR 63-4		6388
1-1/2" to 2-1/2"	SERIES 9/16" HY-GEAR 63-4		6332	4-3/4" to 6-1/2"	SERIES 9/16" HY-GEAR 63-4		6396

*** Call for additional sizes.**



Material Specifications

Screw: 5/16" Hex Head; 300 stainless.

Band: 9/16"; 300 stainless.

Installation Torque: 35 in-lbs. (4Nm).

SNAPLOCK QUICK RELEASE CLAMPS

SNAPLOCK QUICK RELEASE CLAMPS*	
OD SIZE	PART #
2-5/16" to 8-1/2"	56128
2" to 10"	56152

*** Call for additional sizes.**



Material Specifications

Screw: 5/16" Hex Head; Plated carbon steel.

Housing: 200 stainless.

Bridge: Plated carbon steel.

Band: 9/16"; 200 stainless.

Installation Torque: 30 in-lbs. (3.4Nm).

T-BOLT CLAMPS

T-BOLT CLAMPS STYLE STBC		T-BOLT CLAMPS STYLE STBC		T-BOLT CLAMPS STYLE STBC	
OD SIZE	PART #	OD SIZE	PART #	OD SIZE	PART #
1.250" to 1.406"	STBC131	2.766" to 3.062"	STBC300	5.516" to 5.812"	STBC575
1.344" to 1.562"	STBC150	2.886" to 3.182"	STBC312	5.766" to 6.062"	STBC600
1.474" to 1.692"	STBC163	3.016" to 3.312"	STBC325	6.016" to 6.312"	STBC625
1.594" to 1.812"	STBC175	3.266" to 3.562"	STBC350	6.266" to 6.562"	STBC650
1.724" to 1.942"	STBC188	3.386" to 3.682"	STBC362	6.516" to 6.812"	STBC675
1.844" to 2.062"	STBC200	3.516" to 3.812"	STBC375	6.766" to 7.062"	STBC700
1.964" to 2.182"	STBC212	3.586" to 3.882"	STBC382	7.266" to 7.562"	STBC750
2.094" to 2.312"	STBC225	3.766" to 4.062"	STBC400	7.766" to 8.062"	STBC800
2.224" to 2.442"	STBC238	4.016" to 4.312"	STBC425	8.016" to 8.312"	STBC825
2.344" to 2.562"	STBC250	4.266" to 4.562"	STBC450	8.266" to 8.562"	STBC850
2.326" to 2.622"	STBC256	4.516" to 4.812"	STBC475	8.646" to 8.942"	STBC888
2.396" to 2.692"	STBC263	4.766" to 5.062"	STBC500	10.646" to 10.942"	STBC1088
2.516" to 2.812"	STBC275	5.016" to 5.312"	STBC525	12.646" to 12.942"	STBC1288
2.646" to 2.942"	STBC288	5.266" to 5.562"	STBC550		



Material Specifications

Bolt: Can be applied with a standard 7/16" socket wrench, 300 stainless.

Band: 3/4" wide, .25" thick, 300 series stainless steel.

Installation Torque: 50 in-lbs.

CENTER PUNCH CLAMPS

SIZE	GALVANIZED PART #	201 STAINLESS PART #	SIZE	GALVANIZED PART #	201 STAINLESS PART #
13/16" ID x 3/8" WIDE	P-3	P-3-S	2-3/4" ID x 5/8" WIDE	P-11	P-11-S
1-3/8" ID x 3/8" WIDE	P-311	P-311-S	3" ID x 5/8" WIDE	P-12	P-12-S
1" ID 5/8" WIDE	P-4	P-4-S	3-1/2" ID x 5/8" WIDE	P-14	P-14-S
1-1/4" ID x 5/8" WIDE	P-5	P-5-S	4" ID x 5/8" WIDE	P-16	P-16-S
1-1/2" ID x 5/8" WIDE	P-6	P-6-S	4-1/2" ID x 5/8" WIDE	P-18	P-18-S
1-3/4" ID x 5/8" WIDE	P-7	P-7-S	5" ID x 5/8" WIDE	P-20	P-20-S
2" ID x 5/8" WIDE	P-8	P-8-S	6" ID x 5/8" WIDE	P-24	P-24-S
2-1/4" ID x 5/8" WIDE	P-9	P-9-S	7" ID x 5/8" WIDE	P-28	P-28-S
2-1/2" ID x 5/8" WIDE	P-10	P-10-S	8" ID x 5/8" WIDE	P-32	P-32-S
			PUNCH LOK® TOOL	T300-0	



PUNCH LOK® TOOL

J-SERIES OR JR. CLAMPS

SIZE	201 STAINLESS PART #	SIZE	201 STAINLESS PART #
1" ID x 1/2" WIDE	JS203	3-1/2" ID x 3/4" WIDE	JS212
1-1/4" ID x 1/2" WIDE	JS204	4" ID x 3/4" WIDE	JS213
1-1/2" ID x 5/8" WIDE	JS205	4-1/2" ID x 3/4" WIDE	JS214
1-3/4" ID x 5/8" WIDE	JS206	5" ID x 3/4" WIDE	JS215
2" ID x 5/8" WIDE	JS207	6" ID x 3/4" WIDE	JS216
2-1/4" ID x 5/8" WIDE	JS208	6-1/2" ID x 3/4" WIDE	JS217
2-1/2" ID x 5/8" WIDE	JS209	7" ID x 3/4" WIDE	JS218
2-3/4" ID x 3/4" WIDE	JS210	8" ID x 3/4" WIDE	JS219
3" ID x 3/4" WIDE	JS211	BANDED JR. TOOL	C002
		GRIP CLAMP TOOL	GRIP CLAMP TOOL



BANDED JR. TOOL



GRIP CLAMP TOOL

ULTRA LOK® CLAMPS

SIZE*	201 STAINLESS PART #
5" ID x 3/4" WIDE	UL215
7" ID x 3/4" WIDE	UL218
9" ID x 3/4" WIDE	UL228
CORDLESS TOOL	UL4000-D

* Call for additional sizes.



CORDLESS TOOL

BAND AND BUCKLE

SIZE	STAINLESS BAND PART #	STAINLESS BUCKLE PART #
1/2" WIDE x 100 FT.	C204	C254
5/8" WIDE x 100 FT.	C205	C255
3/4" WIDE x 100 FT.	C206	C256
WING-NUT TOOL	C001	



BAND



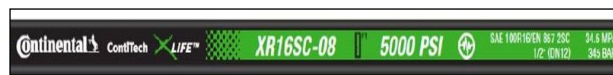
BUCKLE



WING-NUT TOOL

CONTINENTAL HYDRAULIC HOSE

XR16SC HIGH ABRASION 2-WIRE BRAID HYDRAULIC HOSE		WORKING PRESSURE RATINGS	PART #
1/4"	EXTENDED LIFE COVER	5800 PSI	XR16SC-04
3/8"	EXTENDED LIFE COVER	5000 PSI	XR16SC-06
1/2"	EXTENDED LIFE COVER	5000 PSI	XR16SC-08
3/4"	EXTENDED LIFE COVER	3500 PSI	XR16SC-12
1"	EXTENDED LIFE COVER	3000 PSI	XR16SC-16



XCP4S HIGH ABRASION, HIGH PRESSURE 4-WIRE SPIRAL HYDRAULIC HOSE		WORKING PRESSURE RATINGS	PART #
3/4"	EXTENDED LIFE COVER	4100 PSI	XCP4S-12
1"	EXTENDED LIFE COVER	4100 PSI	XCP4S-16
1-1/4"	EXTENDED LIFE COVER	4100 PSI	XCP4S-20
1-1/2"	EXTENDED LIFE COVER	4100 PSI	XCP4S-24
2"	EXTENDED LIFE COVER	4100 PSI	XCP4S-32



XCP5S HIGH ABRASION, VERY HIGH PRESSURE 4 & 6-WIRE SPIRAL HYDRAULIC HOSE		WORKING PRESSURE RATINGS	PART #
3/4"	EXTENDED LIFE COVER	5100 PSI	XCP5S-12
1"	EXTENDED LIFE COVER	5100 PSI	XCP5S-16
1-1/4"	EXTENDED LIFE COVER	5100 PSI	XCP5S-20
1-1/2"	EXTENDED LIFE COVER	5100 PSI	XCP5S-24
2"	EXTENDED LIFE COVER	5100 PSI	XCP5S-32



HYDRAULIC HOSE ENDS

JIC 37° Flare (SAE J514)

Female
Swivel



JCFX

JIC 37° Flare (SAE J514)

Female
45° Elbow
Swivel



JCFX45

JIC 37° Flare (SAE J514)

Female
90° Elbow
Swivel



JCFX90

JIC 37° Flare (SAE J514)

Male



JCM

NPTF

Male



NPM

NPTF

Male
Swivel



NPMX

NPSM

Female
Swivel



NSFX

O-Ring Boss Straight Thread (SAE J514)

Male



OBM

O-Ring Boss Straight Thread (SAE J514)

Male
90° Block Elbow
Swivel



OBMX90B

O-Ring Face Seal (SAE J1453 ORS/ORFS)

Female
Swivel



OFFX

O-Ring Face Seal (SAE J1453 ORS/ORFS)

Female
45° Elbow
Swivel



OFFX45

O-Ring Face Seal (SAE J1453 ORS/ORFS)

Female
90° Elbow
Swivel



OFFX90

Metric, British Pipe, Code 61 and Code 62 Flange, SAE, JIS, Komatsu and other styles available.

HYDRAULIC QUICK DISCONNECT COUPLINGS



AG INTERCHANGE
COUPLINGS



FLAT FACE COUPLINGS



ISO B INTERCHANGE
COUPLINGS

BVA® HYDRAULIC EQUIPMENT



PUMPS



CYLINDERS



KITS



CONTROL VALVES



PRESSES & TOOLS



BOTTLE JACKS

HYDRAULIC OIL AND SPILL CONTAINMENT ACCESSORIES



OIL ABSORBENT PADS
SOLD IN PACKS OF 100
DP9W



UNIVERSAL ABSORBENT PADS
SOLD IN PACKS OF 100
DP9G



HYD OIL 32 WEIGHT
5 GALLON PAILS ONLY
CUIAW32-5



HYD OIL 68 WEIGHT
5 GALLON PAILS ONLY
CUIAW68-5



UNIVERSAL SPILL KIT
IN A BAG
OILM7000



UNIVERSAL SPILL KIT
55-GALLON
OILM7071

PRESSURE WASHER WASHDOWN HOSE ASSEMBLIES

PRESSURE WASHER HOSES	PART #
3/8" x 50 FT. 4000 PSI W/ 3/8" MALE NPT ENDS AND BEND RESTRICTORS	PW-06X50FT.
3/8" x 100 FT. 4000 PSI W/ 3/8" MALE NPT ENDS AND BEND RESTRICTORS	PW-06X100FT.
3/8" x 50 FT. 4000 PSI W/ 3/8" MALE NPT ENDS W/QUICK DISCONNECTS AND BEND RESTRICTORS	PW-06X50FT.QD
3/8" x 100 FT. 4000 PSI W/ 3/8" MALE NPT ENDS W/QUICK DISCONNECTS AND BEND RESTRICTORS	PW-06X100FT.QD
3/8" x 50 FT. 4000 PSI W/3/8 MALE NPT ENDS W/QUICK DISCONNECTS AND BEND RESTRICTORS GREY NON-MARKING	3/8X50FT.PWGY W/QD'S

PRESSURE WASHER ACCESSORIES	PART #
GUN ONLY	SG-920
3 FT. WAND	PW/WAND 36
4 FT. WAND	PW/WAND 48
1/4" FEMALE QUICK DISCONNECT SOCKET	25FS
3/8" FEMALE QUICK DISCONNECT SOCKET	38FS
3/8" MALE QUICK DISCONNECT x MALE PIPE	38MP
3/8" MALE QUICK DISCONNECT x FEMALE PIPE	38FP
REPLACEMENT O-RING FOR 1/4" SOCKET	OR110B90
REPLACEMENT O-RING FOR 3/8" SOCKET	OR112B90
QUICK DISCONNECT SPRAY TIPS (0°, 15°, 25° AND 40° DEGREE SPRAY PATTERN)	0° TI745-0055
	15° TI745-1555
	25° TI745-2555
	40° TI745-4055



WITHOUT QUICK DISCONNECTS



WITH QUICK DISCONNECTS



NON-MARKING WITH QUICK DISCONNECTS



GUN AND WAND SOLD SEPERATELY



FEMALE QUICK DISCONNECT



MALE QUICK DISCONNECT



0°



15°



25°



40°

CONTINENTAL FRONTIER CONTRACTOR WATER HOSES AND ACCESSORIES	PART #
3/4" x 50 FT. HEAVY DUTY BLACK CONTINENTAL FRONTIER CONTRACTOR WATER HOSE COUPLED. MADE IN USA.	WD.7550GHT
3/4" x 100 FT. HEAVY DUTY BLACK CONTINENTAL FRONTIER CONTRACTOR WATER HOSE COUPLED. MADE IN USA.	WD.75100GHT
INSULATED GARDEN HOSE NOZZLE	572TFR
RUBBER GARDEN HOSE WASHERS	GH-W



BANJO BALL VALVES



4 BOLTED VALVES							
PART #	DESCRIPTION	MAX PSI	PIPE SIZE	OPENING THRU	QTY	REPLACEMENT HANDLE	REPAIR KIT
V050	1/2" FULL PORT VALVE	300	1/2"	3/4"	24/box	V10153A	V07200
V075	3/4" FULL PORT VALVE	300	3/4"	3/4"	24/box	V10153A	V07200
V100	1" STANDARD PORT VALVE	225	1"	3/4"	24/box	V10153A	V07200
V100FP	1" FULL PORT VALVE	300	1"	1"	24/box	V10153A	V10200
V125	1-1/4" STANDARD PORT VALVE	300	1-1/4"	1"	24/box	V10153A	V10200
V125FP	1-1/4" FULL PORT VALVE	225	1-1/4"	1-1/2"	24/box	V20153	V20200
V150	1-1/2" FULL PORT VALVE	225	1-1/2"	1-1/2"	24/box	V20153	V20200
V200	2" STANDARD PORT VALVE	225	2"	1-1/2"	24/box	V20153	V20200



6 BOLTED VALVES							
PART #	DESCRIPTION	MAX PSI	PIPE SIZE	OPENING THRU BALL	QTY	REPLACEMENT HANDLE	REPAIR KIT
V200FP	2" FULL PORT VALVE	225	2"	2"	8/box	V25153	V25200
V300	3" STANDARD PORT VALVE	225	3"	2-1/2"	8/box	V25153	V30200
V300FP	3" FULL PORT VALVE	200	3"	3"	6/box	V25153	V35200
V400	4" STANDARD PORT VALVE	100	4"	3-1/2"	4/box	V25153	V40200
VFMT200FP	2" FULL PORT VALVE W/ F ADAPTER	225	2"	2"	6/box	V25153	V25200

1/2"—2" 4 BOLTED VALVES

Features:

- FKM Seal
- Precision molded polypropylene is reinforced with fiberglass for additional strength
- Self-aligning ball moves freely against the PTFE seats for smooth operation. The valve opens and closes with very little pressure on the handle
- Ball is diamond turned, after molding, to make it spherically perfect, which provides precise contact between ball and seats
- PTFE self-lubricating stem bushings and seats cannot stick or bind
- Stainless steel bolts

Repair Kit Includes:

- Ball
- Body gasket
- Thrust washer
- Ball seats
- Upper stem bushing
- Stem O-ring

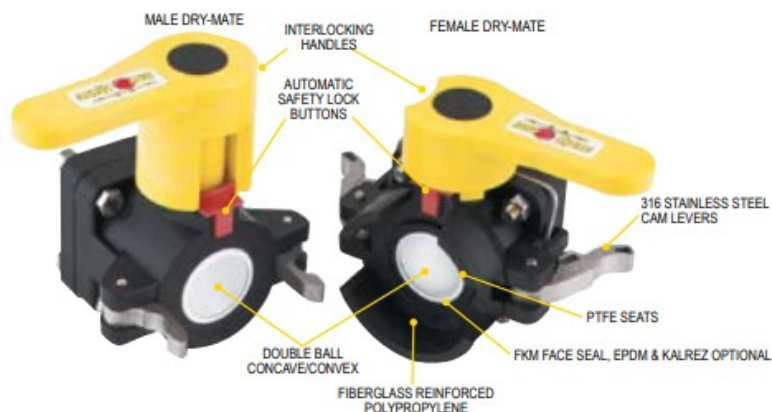
2"—4" 6 BOLTED VALVES

Same above Features and Repair Kit contents.



3 WAY SIDE LOAD BALL VALVES, ALSO AVAILABLE

BANJO DRY-MATE COUPLINGS



Features:

- Lightweight
- Easy to use
- Economical
- Reduces risk of exposure
- Wide range of chemical resistance
- Patented double ball design with cam lever connection
- When properly installed and operated, the assembly will not accidentally separate while fluid is flowing; preventing costly mishaps

1-1/2" POLY MALE DRY-MATE

PART #	DESCRIPTION	MAX PSI	PIPE SIZE	OPENING THRU BALL	QTY
DM150A	1-1/2" MALE X FPT NPT W/FKM SEALS	100	1-1/2"	1-1/2"	1
DM150AE	1-1/2" MALE X FPT NPT W/EPDM SEALS	100	1-1/2"	1-1/2"	1
DM150AT	1-1/2" MALE X FPT NPT W/ KALREZ® SEALS	100	1-1/2"	1-1/2"	1
DM150AB	1-1/2" MALE X FPT BSP W/FKM SEALS	100	1-1/2"	1-1/2"	1
DM150ABE	1-1/2" MALE X FPT BSP W/EPDM SEALS	100	1-1/2"	1-1/2"	1
DM150ABT	1-1/2" MALE X FPT BSP W/ KALREZ® SEALS	100	1-1/2"	1-1/2"	1

2" POLY MALE DRY-MATE

PART #	DESCRIPTION	MAX PSI	PIPE SIZE	OPENING THRU BALL	QTY
DM200A	2" MALE X FPT NPT W/FKM SEALS	100	2"	1-1/2"	1
DM200AB	2" MALE X FPT BSP W/FKM SEALS	100	2"	1-1/2"	1
DM200AE	2" MALE X FPT NPT W/EPDM SEALS	100	2"	1-1/2"	1
DM200AT	2" MALE X FPT NPT W/ KALREZ® SEALS	100	2"	1-1/2"	1
DMMT201A	2" MALE X MALE NPT W/LOW PROFILE HANDLE	100	2"	1-1/2"	1
DMMT201AE	2" MALE X MALE NPT W/LOW PROFILE HANDLE W/EPDM SEALS	100	2"	1-1/2"	1

1-1/2" POLY FEMALE DRY-MATE

PART #	DESCRIPTION	MAX PSI	PIPE SIZE	OPENING THRU BALL	QTY
DM150D	1-1/2" FEMALE X FPT NPT W/FKM SEALS	100	1-1/2"	1-1/2"	1
DM150DE	1-1/2" FEMALE NPT W/EPDM SEALS	100	1-1/2"	1-1/2"	1
DM150DT	1-1/2" FEMALE NPT W/KALREZ® SEALS	100	1-1/2"	1-1/2"	1
DM150DB	1-1/2" FEMALE X FPT BSP W/FKM SEALS	100	1-1/2"	1-1/2"	1
DM150DBE	1-1/2" FEMALE X FPT BSP W/EPDM SEALS	100	1-1/2"	1-1/2"	1
DM150DBT	1-1/2" FEMALE X FPT BSP W/KALREZ® SEALS	100	1-1/2"	1-1/2"	1

2" POLY FEMALE DRY-MATE

PART #	DESCRIPTION	MAX PSI	PIPE SIZE	OPENING THRU BALL	QTY
DM200D	2" FEMALE X FPT NPT W/FKM SEALS	100	2"	1-1/2"	1
DM200DB	2" FEMALE X FPT BSP W/FKM SEALS	100	2"	1-1/2"	1
DM200DE	2" FEMALE W/EPDM SEALS	100	2"	1-1/2"	1
DM200DT	2" FEMALE W/KALREZ® SEALS	100	2"	1-1/2"	1



DM220D

DM220A

2" FULL PORT POLY DRY-MATES

PART #	DESCRIPTION	MAX PSI	PIPE SIZE	OPENING THRU BALL	QTY
DM220D	2" FEMALE X FPT NPT W/FKM SEALS	225	2"	2"	1
DM220DB	2" FEMALE BSP X FPT NPT W/FKM SEALS	225	2"	2"	1
DM220A	2" MALE X FPT W/FKM SEALS	225	2"	2"	1
DM220AB	2" MALE BSP X FPT W/FKM SEALS	225	2"	2"	1

BANJO FITTINGS AND ADAPTERS



POLY BULKHEAD FITTINGS				
PART #	DESCRIPTION	HOLE SIZE	MAX PSI	QTY
TF050	1/2" POLY BULKHEAD EPDM TANK FITTING	1-5/8"	300	10/BAG
TF075	3/4" POLY BULKHEAD EPDM TANK FITTING	1-5/8"	300	10/BAG
TF075V	3/4" POLY BULKHEAD FKM TANK FITTING	1-5/8"	300	1
TF100	1" POLY BULKHEAD EPDM TANK FITTING	2-1/4"	300	10/BAG
TF125	1-1/4" POLY BULKHEAD EPDM TANK FITTING	2-1/4"	300	1
TF150	1-1/2" POLY BULKHEAD EPDM TANK FITTING	3"	300	1
TF200	2" POLY BULKHEAD EPDM TANK FITTING	3"	300	1
TF200V	2" POLY BULKHEAD FKM TANK FITTING	3"	300	1
TF220	2" POLY BULKHEAD EPDM TANK FITTING	3-1/4"	300	1
TF300	3" POLY BULKHEAD EPDM TANK FITTING	4-1/2"	300	1
TF400	4" POLY BULKHEAD EPDM TANK FITTING	5-3/4"	225	1



THREADED ANSI FLANGES		
PART #	DESCRIPTION	QTY
AF100	1" FEMALE THREADED ANSI FLANGE	1
AF150	1-1/2" FEMALE THREADED ANSI FLANGE	1
AF200	2" FEMALE THREADED ANSI FLANGE	1
AF300	3" FEMALE THREADED ANSI FLANGE	1
AF400	4" FEMALE THREADED ANSI FLANGE	1

BANJO PIPE ADAPTERS



NIPPLES

PART #	DESCRIPTION	MAX PSI	QTY
NIP025-SH	1/4" SHORT POLY NIPPLE	300	10/BAG
NIP038-SH	3/8" SHORT POLY NIPPLE	300	10/BAG
NIP050-SH	1/2" SHORT POLY NIPPLE	300	10/BAG
NIP050-3	1/2" X 3" POLY NIPPLE	300	10/BAG
NIP075-SH	3/4" SHORT POLY NIPPLE	300	10/BAG
NIP075-4	3/4" X 4" POLY NIPPLE	300	10/BAG
NIP075-6	3/4" X 6" POLY NIPPLE	300	10/BAG
NIP100-SH	1" SHORT POLY NIPPLE	300	10/BAG
NIP100-4	1" X 4" POLY NIPPLE	300	10/BAG
NIP100-6	1" X 6" POLY NIPPLE	300	10/BAG
NIP125-SH	1-1/4" SHORT POLY NIPPLE	300	10/BAG
NIP125-4	1-1/4" X 4" POLY NIPPLE	300	10/BAG
NIP125-6	1-1/4" X 6" POLY NIPPLE	300	10/BAG
NIP150-SH	1-1/2" SHORT POLY NIPPLE	300	10/BAG
NIP150-3	1-1/2" X 3" POLY NIPPLE	300	10/BAG
NIP150-4	1-1/2" X 4" POLY NIPPLE	300	10/BAG
NIP150-5	1-1/2" X 5" POLY NIPPLE	300	10/BAG
NIP150-6	1-1/2" X 6" POLY NIPPLE	300	10/BAG
NIP200-SH	2" SHORT POLY NIPPLE	300	10/BAG
NIP200-4	2" X 4" POLY NIPPLE	300	10/BAG
NIP200-6	2" X 6" POLY NIPPLE	300	10/BAG
NIP300-SH	3" SHORT POLY NIPPLE	300	1
NIP300-4	3" X 4" POLY NIPPLE	300	1
NIP300-6	3" X 6" POLY NIPPLE	300	1
NIP400-SH	4" SHORT POLY NIPPLE	300	1



REDUCING NIPPLES

PART #	DESCRIPTION	MAX PSI	QTY
RN050-038	1/2" X 3/8" POLY REDUCING NIPPLE	300	10/BAG
RN075-050	3/4" X 1/2" POLY REDUCING NIPPLE	300	10/BAG
RN100-050	1" X 1/2" POLY REDUCING NIPPLE	300	10/BAG
RN100-075	1" X 3/4" POLY REDUCING NIPPLE	300	10/BAG
RN125-075	1-1/4" X 3/4" POLY REDUCING NIPPLE	300	10/BAG
RN125-100	1-1/4" X 1" POLY REDUCING NIPPLE	300	10/BAG
RN150-100	1-1/2" X 1" POLY REDUCING NIPPLE	300	10/BAG
RN150-125	1-1/2" X 1-1/4" POLY REDUCING NIPPLE	300	10/BAG
RN200-125	2" X 1-1/4" POLY REDUCING NIPPLE	300	10/BAG
RN200-150	2" X 1-1/2" POLY REDUCING NIPPLE	300	10/BAG
RN300-200	3" X 2" POLY REDUCING NIPPLE	300	1

PIPE COUPLINGS

PART #	DESCRIPTION	MAX PSI	QTY
CPLG025	1/4" POLY PIPE COUPLING	300	10/BAG
CPLG038	3/8" POLY PIPE COUPLING	300	10/BAG
CPLG050	1/2" POLY PIPE COUPLING	300	10/BAG
CPLG075	3/4" POLY PIPE COUPLING	300	10/BAG
CPLG100	1" POLY PIPE COUPLING	300	10/BAG
CPLG125	1-1/4" POLY PIPE COUPLING	300	10/BAG
CPLG150	1-1/2" POLY PIPE COUPLING	300	10/BAG
CPLG200	2" POLY PIPE COUPLING	300	10/BAG
CPLG300	3" POLY PIPE COUPLING	225	1



REDUCING COUPLINGS

PART #	DESCRIPTION	MAX PSI	QTY
RC100-075	1" X 3/4" POLY REDUCING COUPLING	300	10/BAG
RC150-100	1-1/2" X 1" POLY REDUCING COUPLING	300	10/BAG
RC150-125	1-1/2" X 1-1/4" POLY REDUCING COUPLING	300	10/BAG
RC200-050	2" X 1/2" POLY REDUCING COUPLING	300	10/BAG
RC200-100	2" X 1" POLY REDUCING COUPLING	300	10/BAG
RC200-125	2" X 1-1/4" POLY REDUCING COUPLING	300	10/BAG
RC200-150	2" X 1-1/2" POLY REDUCING COUPLING	300	10/BAG
RC300-200	3" X 2" POLY REDUCING COUPLING	300	1



REDUCING BUSHINGS

PART #	DESCRIPTION	MAX PSI	QTY
RB038-025	3/8" MPT X 1/4" FPT REDUCING BUSHING	300	10/BAG
RB050-025	1/2" MPT X 1/4" FPT REDUCING BUSHING	300	10/BAG
RB050-038	1/2" MPT X 3/8" FPT REDUCING BUSHING	300	10/BAG
RB075-018	3/4" MPT X 1/8" FPT REDUCING BUSHING	300	10/BAG
RB075-025	3/4" MPT X 1/4" FPT REDUCING BUSHING	300	10/BAG
RB075-038	3/4" MPT X 3/8" FPT REDUCING BUSHING	300	10/BAG
RB075-050	3/4" MPT X 1/2" FPT REDUCING BUSHING	300	10/BAG
RB100-025	1" MPT X 1/4" FPT REDUCING BUSHING	300	10/BAG
RB100-050	1" MPT X 1/2" FPT REDUCING BUSHING	300	10/BAG
RB100-075	1" MPT X 3/4" FPT REDUCING BUSHING	300	10/BAG
RB125-075	1-1/4" MPT X 3/4" FPT REDUCING BUSHING	300	10/BAG
RB125-100	1-1/4" MPT X 1" FPT REDUCING BUSHING	300	10/BAG
RB150-075	1-1/2" MPT X 3/4" FPT REDUCING BUSHING	300	10/BAG
RB150-100	1-1/2" MPT X 1" FPT REDUCING BUSHING	300	10/BAG
RB150-125	1-1/2" MPT X 1-1/4" FPT REDUCING BUSHING	300	10/BAG
RB200-075	2" MPT X 3/4" FPT REDUCING BUSHING	300	10/BAG
RB200-100	2" MPT X 1" FPT REDUCING BUSHING	300	10/BAG
RB200-125	2" MPT X 1-1/4" FPT REDUCING BUSHING	300	10/BAG
RB200-150	2" MPT X 1-1/2" FPT REDUCING BUSHING	300	10/BAG
RB300-150	3" MPT X 1-1/2" FPT REDUCING BUSHING	300	1
RB300-200	3" MPT X 2" FPT REDUCING BUSHING	300	1
RB400-300	4" MPT X 3" FPT REDUCING BUSHING	300	1

PIPE CAPS

PART #	DESCRIPTION	MAX PSI	QTY
CAP050	1/2" POLY PIPE CAP	300	10/BAG
CAP075	3/4" POLY PIPE CAP	300	10/BAG
CAP100	1" POLY PIPE CAP	300	10/BAG
CAP125	1-1/4" POLY PIPE CAP	300	10/BAG
CAP150	1-1/2" POLY PIPE CAP	300	10/BAG
CAP200	2" POLY PIPE CAP	300	10/BAG
CAP300	3" POLY PIPE CAP	300	1



PIPE PLUGS

PART #	DESCRIPTION	MAX PSI	QTY
PLUG025	1/4" POLY PIPE PLUG	300	10/BAG
PLUG038	3/8" POLY PIPE PLUG	300	10/BAG
PLUG050	1/2" POLY PIPE PLUG	300	10/BAG
PLUG075	3/4" POLY PIPE PLUG	300	10/BAG
PLUG100	1" POLY PIPE PLUG	300	10/BAG
PLUG125	1-1/4" POLY PIPE PLUG	300	10/BAG
PLUG150	1-1/2" POLY PIPE PLUG	300	10/BAG
PLUG200	2" POLY PIPE PLUG	300	10/BAG
PLUG300	3" POLY PIPE PLUG	300	1



CROSSES

PART #	DESCRIPTION	MAX PSI	QTY
CR025	1/4" POLY CROSS	300	10/BAG
CR038	3/8" POLY CROSS	300	10/BAG
CR050	1/2" POLY CROSS	300	5/BAG
CR075	3/4" POLY CROSS	300	5/BAG
CR100	1" POLY CROSS	300	5/BAG
CR125	1-1/4" POLY CROSS	300	1
CR150	1-1/2" POLY CROSS	300	1
CR200	2" POLY CROSS	300	1



TEES

PART #	DESCRIPTION	MAX PSI	QTY
TEE025	1/4" POLY TEE	300	10/BAG
TEE038	3/8" POLY TEE	300	10/BAG
TEE050	1/2" POLY TEE	300	10/BAG
TEE075	3/4" POLY TEE	300	10/BAG
TEE100	1" POLY TEE	300	10/BAG
TEE125	1-1/4" POLY TEE	300	10/BAG
TEE150	1-1/2" POLY TEE	300	1
TEE200	2" POLY TEE	300	1
TEE300	3" POLY TEE	225	1

BANJO PIPE ADAPTERS AND HOSE BARBS



90° ELBOWS			
PART #	DESCRIPTION	MAX PSI	QTY
EL025-90	1/4" 90° POLY ELBOW	300	10/BAG
EL038-90	3/8" 90° POLY ELBOW	300	10/BAG
EL050-90	1/2" 90° POLY ELBOW	300	10/BAG
EL075-90	3/4" 90° POLY ELBOW	300	10/BAG
EL100-90	1" 90° POLY ELBOW	300	10/BAG
EL125-90	1-1/4" 90° POLY ELBOW	300	10/BAG
EL150-90	1-1/2" 90° POLY ELBOW	300	10/BAG
EL200-90	2" 90° POLY ELBOW	300	1
EL300-90	3" 90° POLY ELBOW	300	1



45° ELBOW			
PART #	DESCRIPTION	MAX PSI	QTY
EL100-45	1" 45° POLY ELBOW	300	10/BAG



90° STREET ELBOWS			
PART #	DESCRIPTION	MAX PSI	QTY
SL025-90	1/4" 90° POLY STREET ELBOW	300	10/BAG
SL038-90	3/8" 90° POLY STREET ELBOW	300	10/BAG
SL050-90	1/2" 90° POLY STREET ELBOW	300	10/BAG
SL075-90	3/4" 90° POLY STREET ELBOW	300	10/BAG
SL100-90	1" 90° POLY STREET ELBOW	300	10/BAG
SL125-90	1-1/4" 90° POLY STREET ELBOW	300	10/BAG
SL150-90	1-1/2" 90° POLY STREET ELBOW	300	10/BAG
SL200-90	2" 90° POLY STREET ELBOW	300	10/BAG
SL300-90	3" 90° POLY STREET ELBOW	300	1



45° STREET ELBOWS			
PART #	DESCRIPTION	MAX PSI	QTY
SL075-45	3/4" 45° POLY STREET ELBOW	300	10/BAG
SL100-45	1" 45° POLY STREET ELBOW	300	10/BAG
SL125-45	1-1/4" 45° POLY STREET ELBOW	300	10/BAG
SL150-45	1-1/2" 45° POLY STREET ELBOW	300	10/BAG
SL200-45	2" 45° POLY STREET ELBOW	225	10/BAG
SL300-45	3" 45° POLY STREET ELBOW	300	1



90° HOSE BARB ELBOWS			
PART #	DESCRIPTION	MAX PSI	QTY
HBEL100-90	1" 90° POLY HOSE BARB ELBOW	300	10/BAG
HBEL150/100-90	1-1/2" X 1" 90° POLY HOSE BARB ELBOW	300	1
HBB20012590	2" X 1-1/4" 90° POLY HOSE BARB ELBOW	300	10/BAG

STRAIGHT HOSE BARBS			
PART #	DESCRIPTION	MAX PSI	QTY
HB025	1/4" MALE THREAD X 1/4" HOSE BARB	300	10/BAG
HB025-038	1/4" MALE THREAD X 3/8" HOSE BARB	300	10/BAG
HB025-050	1/4" MALE THREAD X 1/2" HOSE BARB	300	10/BAG
HB038	3/8" MALE THREAD X 3/8" HOSE BARB	300	10/BAG
HB038-025	3/8" MALE THREAD X 1/4" HOSE BARB	300	10/BAG
HB038-050	3/8" MALE THREAD X 1/2" HOSE BARB	300	10/BAG
HB050-025	1/2" MALE THREAD X 1/4" HOSE BARB	300	10/BAG
HB050-038	1/2" MALE THREAD X 3/8" HOSE BARB	300	10/BAG
HB050	1/2" MALE THREAD X 1/2" HOSE BARB	300	10/BAG
HB050-075	1/2" MALE THREAD X 3/4" HOSE BARB	300	10/BAG
HB075-038	3/4" MALE THREAD X 3/8" HOSE BARB	300	10/BAG
HB075-050	3/4" MALE THREAD X 1/2" HOSE BARB	300	10/BAG
HB075-058	3/4" MALE THREAD X 5/8" HOSE BARB	300	10/BAG
HB075	3/4" MALE THREAD X 3/4" HOSE BARB	300	10/BAG
HB075-100	3/4" MALE THREAD X 1" HOSE BARB	300	10/BAG
HB100-075	1" MALE THREAD X 3/4" HOSE BARB	300	10/BAG
HB100	1" MALE THREAD X 1" HOSE BARB	300	10/BAG
HB100-125	1" MALE THREAD X 1-1/4" HOSE BARB	300	10/BAG
HB125-075	1-1/4" MALE THREAD X 3/4" HOSE BARB	300	10/BAG
HB125-100	1-1/4" MALE THREAD X 1" HOSE BARB	300	10/BAG
HB125	1-1/4" MALE THREAD X 1-1/4" HOSE BARB	300	10/BAG
HB125-150	1-1/4" MALE THREAD X 1-1/2" HOSE BARB	300	10/BAG
HB150-100	1-1/2" MALE THREAD X 1" HOSE BARB	300	10/BAG
HB150-125	1-1/2" MALE THREAD X 1-1/4" HOSE BARB	300	10/BAG
HB150	1-1/2" MALE THREAD X 1-1/2" HOSE BARB	300	10/BAG
HB150-200	1-1/2" MALE THREAD X 2" HOSE BARB	300	10/BAG
HB200-150	2" MALE THREAD X 1-1/2" HOSE BARB	300	10/BAG
HB200	2" MALE THREAD X 2" HOSE BARB	300	10/BAG
HB300	3" MALE THREAD X 3" HOSE BARB	225	1
HB400	4" MALE THREAD X 4" HOSE BARB	150	1



HOSE BARB TEES			
PART #	DESCRIPTION	MAX PSI	QTY
HBT025	1/4" HOSE BARB TEE	300	10/BAG
HBT038	3/8" HOSE BARB TEE	300	10/BAG
HBT050-038	1/2" X 1/2" X 3/8" HOSE BARB TEE	300	10/BAG
HBT050	1/2" HOSE BARB TEE	300	10/BAG
HBT050-075	1/2" X 1/2" X 3/4" HOSE BARB TEE	300	10/BAG
HBT075-050	3/4" X 3/4" X 1/2" HOSE BARB TEE	300	10/BAG
HBT075	3/4" HOSE BARB TEE	300	10/BAG
HBT075-100	3/4" X 3/4" X 1" HOSE BARB TEE	300	10/BAG
HBT100-075	1" X 1" X 3/4" HOSE BARB TEE	300	10/BAG
HBT100	1" HOSE BARB TEE	300	10/BAG
HBT200	2" HOSE BARB TEE	300	1
HBT300	3" HOSE BARB TEE	300	1



HOSE MENDERS			
PART #	DESCRIPTION	MAX PSI	QTY
HM025	1/4" X 1/4" HOSE BARB	300	10/BAG
HM038	3/8" X 3/8" HOSE BARB	300	10/BAG
HM050	1/2" X 1/2" HOSE BARB	300	10/BAG
HM075	3/4" X 3/4" HOSE BARB	300	10/BAG
HM100	1" X 1" HOSE BARB	300	10/BAG
HM125	1-1/4" X 1-1/4" HOSE BARB	300	10/BAG
HM150	1-1/2" X 1-1/2" HOSE BARB	300	10/BAG
HM200	2" X 2" HOSE BARB	300	10/BAG
HM300	3" X 3" HOSE BARB	300	1

BANJO LINE STRAINERS



1" – 1-1/4" Y STRAINERS			
PART #	DESCRIPTION	MAX PSI	QTY
LS100-20	1" X 1" Y STRAINER W/20 MESH SS SCREEN	200	1
LS100-40	1" X 1" Y STRAINER W/40 MESH SS SCREEN	200	1
LS100-80	1" X 1" Y STRAINER W/80 MESH SS SCREEN	200	1
LS125-20	1-1/4" X 1-1/4" Y STRAINER W/20 MESH SS SCREEN	200	1
LS125-40	1-1/4" X 1-1/4" Y STRAINER W/40 MESH SS SCREEN	200	1
LS125-80	1-1/4" X 1-1/4" Y STRAINER W/80 MESH SS SCREEN	200	1

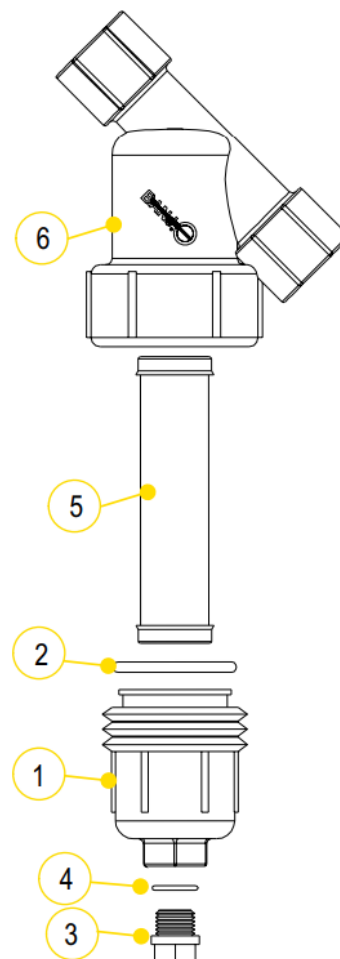
1-1/2" Y STRAINERS			
PART #	DESCRIPTION	MAX PSI	QTY
LS150-06	1-1/2" X 1-1/2" Y STRAINER W/6 MESH SS SCREEN	150	1
LS150-12	1-1/2" X 1-1/2" Y STRAINER W/12 MESH SS SCREEN	150	1
LS150-20	1-1/2" X 1-1/2" Y STRAINER W/20 MESH SS SCREEN	150	1
LS150-30	1-1/2" X 1-1/2" Y STRAINER W/30 MESH SS SCREEN	150	1
LS150-50	1-1/2" X 1-1/2" Y STRAINER W/50 MESH SS SCREEN	150	1
LS150-80	1-1/2" X 1-1/2" Y STRAINER W/80 MESH SS SCREEN	150	1
LS150-120	1-1/2" X 1-1/2" Y STRAINER W/120 MESH SS SCREEN	150	1

2" Y STRAINERS			
PART #	DESCRIPTION	MAX PSI	QTY
LS200-06	2" X 2" Y STRAINER W/6 MESH POLY RIBBED SS SCREEN	150	1
LS200-12	2" X 2" Y STRAINER W/12 MESH POLY RIBBED SS SCREEN	150	1
LS200-20	2" X 2" Y STRAINER W/20 MESH POLY RIBBED SS SCREEN	150	1
LS200-30	2" X 2" Y STRAINER W/30 MESH POLY RIBBED SS SCREEN	150	1
LS200-50	2" X 2" Y STRAINER W/50 MESH POLY RIBBED SS SCREEN	150	1
LS200-80	2" X 2" Y STRAINER W/80 MESH POLY RIBBED SS SCREEN	150	1
LS200-100	2" X 2" Y STRAINER W/100 MESH POLY RIBBED SS SCREEN	150	1
LS200-120	2" X 2" Y STRAINER W/120 MESH POLY RIBBED SS SCREEN	150	1

BANJO LINE STRAINER REPLACEMENT PARTS

1" – 1-1/4" REPLACEMENT PARTS			
ITEM	PART #	DESCRIPTION	QTY
1	LS100-C1	1"-1-1/4" END CAP (CONTAINS #1, #3, 4)	1
2	LS100-G	1"-1-1/4" O-RING	1
2	LS100-GV	1"-1-1/4" FKM GASKET	1
3	12777	1/2" PLUG (FITS 1"-1-1/4")	1
5	LS120	1"-1-1/4" 20 MESH SCREEN	1
5	LS140	1"-1-1/4" 40 MESH SCREEN	1
5	LS180	1"-1-1/4" 80 MESH SCREEN	1
6	LS100-B	1" Y BODY	1
6	LS125-B	1-1/4" Y BODY	1
N/S	LS100B/C1	1" Y BODY, CAP & GASKET	1
N/S	LS125B/C1	1-1/4" Y BODY, CAP & GASKET	1

1-1/2" – 2" REPLACEMENT PARTS			
ITEM	PART #	DESCRIPTION	QTY
1	LS150-C	1-1/2" - 2" END CAP (CONTAINS #1, #3, 4)	1
2	LS150-G	1-1/2"-2" O-RING	1
2	LS150-GV	1-1/2"-2" FKM GASKET	1
3	LSQ200-PL	1" DRAIN PLUG (FITS 1-1/2" - 2")	1
4	LSQ200-RV	1-1/2"-2" FKM O-RING FOR DRAIN PLUG	1
5	LS206	1-1/2"-2" 6 MESH SCREEN	1
5	LS212	1-1/2"-2" 12 MESH SCREEN	1
5	LS220	1-1/2"-2" 20 MESH SCREEN	1
5	LS230	1-1/2"-2" 30 MESH SCREEN	1
5	LS250	1-1/2"-2" 50 MESH SCREEN	1
5	LS280	1-1/2"-2" 80 MESH SCREEN	1
5	LS2100	1-1/2"-2" 100 MESH SCREEN	1
5	LS2120	1-1/2"-2" 120 MESH SCREEN	1
5	LS212P	1-1/2"-2" 12 MESH ALL POLY SCREEN	1
5	LS220P	1-1/2"-2" 20 MESH ALL POLY SCREEN	1
5	LS250P	1-1/2"-2" 50 MESH ALL POLY SCREEN	1
6	LS150-B	1-1/2" Y BODY	1
6	LS200-B	2" Y BODY	1
N/S	LS150B/C	1-1/2" Y BODY, CAP & GASKET	1
N/S	LS200B/C	2" Y BODY, CAP & GASKET	1



MESH SIZE	RIB COLOR
6 MESH	WHITE
12 MESH	BLACK
20 MESH	BEIGE
30 MESH	FLAME RED
40 MESH	BROWN
50 MESH	GENTIAN BLUE
60 MESH	GENTIAN BLUE
80 MESH	ZINC YELLOW
100 MESH	TRAFFIC GREEN
120 MESH	BLACK

FILL-RITE TRANSFER PUMPS



FR1204G
12 Volt DC Pump Only
• Up to 15 GPM
• 1/4 HP motor
• UL/cUL listed motor



FR1210G
12 Volt DC Pump with Hose and Manual Nozzle
• Up to 15 GPM
• 1/4 HP motor
• UL/cUL listed motor



FR1210GA
12 Volt DC Pump with Hose and Automatic Nozzle
• Up to 15 GPM
• 1/4 HP motor
• UL/cUL listed motor



FR1211G
12 Volt DC Pump with Hose, Manual Nozzle and Meter
• Up to 15 GPM
• 1/4 HP motor
• UL/cUL listed



FR1219G
12VDC Pump with In-line Digital Turbine Meter
• Up to 15 GPM
• Cast Iron pump housing
• UL/cUL certified motor and meter



FR4204G
12 Volt DC High Flow Pump Only
• 20 GPM (76 LPM)
• UL listed motor
• Heavy duty cast iron



FR4210G
12 Volt DC High Flow Pump with Hose and Manual Nozzle
• 20 GPM (76 LPM)
• UL listed motor
• Heavy duty cast iron



FR4210GB
12V DC Hi-Flow Pump with Hose and Ultra Hi-Flo Automatic Nozzle
• 20 GPM (76 LPM)
• UL listed motor
• Heavy duty cast iron



FR4211G
12 Volt DC High Flow Pump with Hose, Manual Nozzle and Meter
• 20 GPM (76 LPM)
• UL listed motor
• Heavy duty cast iron

**Other models available, contact your local Sales Representative.*

BANJO CENTRIFUGAL PUMPS



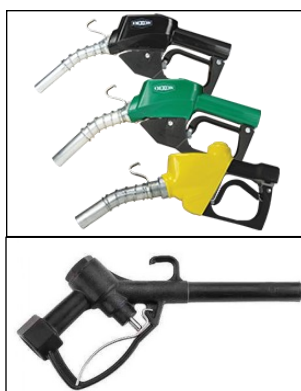
2" POLY PUMPS W/GAS ENGINES			
PART #	DESCRIPTION	HP	QTY
200PH-5	2" POLY PUMP W/5.5 HP HONDA® ENGINE	5.5	1
200PH-5E	2" POLY PUMP W/5.5 HP HONDA® ENGINE W/ ELECTRIC START	5.5	1
200PH-5V	2" POLY PUMP W/5.5 HP HONDA® ENGINE W/FKM & 316 SS SEAL	5.5	1
200PH6	2" POLY PUMP W/6.5 HP HONDA® ENGINE	6.5	1
200P6PRO	2" POLY PUMP W/6.5 HP BRIGGS & STRATTON® ENGINE PRO SERIES	6.5	1
200P6PROE	2" POLY PUMP W/6.5 HP BRIGGS & STRATTON® ENGINE PRO SERIES W/ELECTRIC START	6.5	1
200P6PROV	2" POLY PUMP W/6.5 HP BRIGGS & STRATTON® ENGINE PRO SERIES W/FKM & 316 SS SEAL	6.5	1

2" POLY PUMPS

Features:

- Precision molded construction
- Lightweight
- Corrosion resistant
- Superior design
- Low maintenance
- EPDM standard, FKM available
- Engine warranty service available at authorized Briggs & Stratton® and Honda® dealers

DISPENSING NOZZLES



Material: Aluminum

FUEL TYPE	PART #	INLET	FLOW
Diesel	7H	1" Female NPT	27 GPM at 20 PSI
Unleaded Gasoline	11AP	3/4" Female NPT	18 GPM at 20 PSI
Chemicals	VN100	1" Female NPT	27 GPM at 20 PSI

Material: Polypropylene

PETROLEUM TRANSFER AND DISPENSING HOSES

TANK TRUCK FUEL HOSE				
SIZE	STANDARD LENGTHS	WORKING PRESSURE RATINGS	TEMPERATURE	PART #
3/4"	100 Ft. Roll or Custom Cut Lengths	150 PSI	200	HP TTL
1"	100 Ft. Roll or Custom Cut Lengths	150 PSI	200	HP TT1
1-1/4"	100 Ft. Roll or Custom Cut Lengths	150 PSI	200	HP TT1D
1-1/2"	100 Ft. Roll or Custom Cut Lengths	150 PSI	200	HP TT1H
2"	100 Ft. Roll or Custom Cut Lengths	150 PSI	200	HP TT2

** Call for additional sizes.*

This hose is not to be used for LPG, Propane and/or Natural Gas!!!



SOFTWALL GAS FUEL HOSE				
SIZE	STANDARD LENGTHS	WORKING PRESSURE RATINGS	TEMPERATURE	PART #
5/8"	500 Ft. Roll or Custom Cut Lengths	50 PSI	140	HPSWJ
3/4"	500 Ft. Roll or Custom Cut Lengths	50 PSI	140	HPSWL
1"	500 Ft. Roll or Custom Cut Lengths	50 PSI	140	HPSW1



CLOTH PUSH ON FUEL HOSE				
SIZE	STANDARD LENGTHS	WORKING PRESSURE RATINGS	TEMPERATURE	PART #
1/4"	50 Ft. Roll, 250 Ft. Reels or Custom Cut Lengths	350 PSI	Up to 212	H10004
5/16"	50 Ft. Roll, 250 Ft. Reels or Custom Cut Lengths	350 PSI	Up to 212	H10005
3/8"	50 Ft. Roll, 250 Ft. Reels or Custom Cut Lengths	350 PSI	Up to 212	H10006
1/2"	50 Ft. Roll, 250 Ft. Reels or Custom Cut Lengths	350 PSI	Up to 212	H10008

** Call for additional sizes.*

This hose is not to be used for LPG, Propane and/or Natural Gas!!!



LP GAS HOSE				
SIZE	STANDARD LENGTHS	WORKING PRESSURE RATINGS	TEMPERATURE	PART #
1/4"	350 Ft. Reels or Custom Cut Lengths	350 PSI	180	HLLPD
5/16"	500 Ft. Reels or Custom Cut Lengths	350 PSI	180	HLLPE
3/8"	300 Ft. Reels or Custom Cut Lengths	350 PSI	180	HLLPF
1/2"	500 Ft. Reels or Custom Cut Lengths	350 PSI	180	HLLPH

** Call for additional sizes.*



DRY AND LIQUID FILLED PRESSURE GAUGES



- Liquid Filled Gauges with a stainless case are used for protection in harsh environments
- Stainless Steel Case
- Copper Alloy Wetted parts
- Polycarbonate window +/- 1.5% of span accuracy
- Temperature Range -104°F to 158°F

2-1/2" FACE LIQUID FILLED GAUGES		LOWER MOUNT PART #	CENTER BACK MOUNT PART #
0-15	1/4" MALE NPT THREAD	201L-254B	202L-254B
0-30	1/4" MALE NPT THREAD	201L-254C	202L-254C
0-60	1/4" MALE NPT THREAD	201L-254D	202L-254D
0-100	1/4" MALE NPT THREAD	201L-254E	202L-254E
0-160	1/4" MALE NPT THREAD	201L-254F	202L-254F
0-200	1/4" MALE NPT THREAD	201L-254G	202L-254G
0-300	1/4" MALE NPT THREAD	201L-254H	202L-254H
0-600	1/4" MALE NPT THREAD	201L-254K	202L-254K
0-1000	1/4" MALE NPT THREAD	201L-254M	202L-254M
0-1500	1/4" MALE NPT THREAD	201L-254N	202L-254N
0-2000	1/4" MALE NPT THREAD	201L-254O	202L-254O
0-3000	1/4" MALE NPT THREAD	201L-254P	202L-254P
0-5000	1/4" MALE NPT THREAD	201L-254R	202L-254R
0-10000	1/4" MALE NPT THREAD	201L-254U	202L-254U
30-0 Vacuum	1/4" MALE NPT THREAD	201L-254A	202L-254A

** Call for additional configurations.*

REELCRAFT HOSE REELS, CABLE REELS AND CORD REELS

Reelcraft Reels outlast and outperform all the others. Reelcraft Reels are the industry standard for reliable and durable hose reels and cable reels. No one makes a better hose reel or cable reel. Reelcraft is the global manufacturing leader of hose reels, cord reels, and cable reels for industrial, commercial and professional applications.

Amazon Hose is your complete source for Reelcraft hose reels and cord reels. Our knowledgeable sales staff is here to help you find the right Reelcraft hose reel to fit the job and at the right price to fit your budget. Contact us today to place your hose reel order!



**Reelcraft Air
Hose Reels**



**Reelcraft Fuel/Gas
Hose Reels**

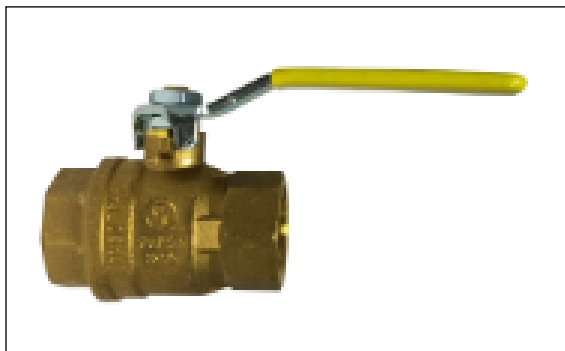


**Reelcraft Oil
Hose Reels**



**Reelcraft Welding
Hose Reels**

FULL PORT BRASS BALL VALVES



SIZE	PART #
1/4"	VFPBD
3/8"	VFPBF
1/2"	VFPBH
3/4"	VFPBL
1"	VFPB1
1-1/4"	VFPB1D
1-1/2"	VFPB1H
2"	VFPB2
3"	VFPB3
4"	VFPB4

- **SOLID CHROME PLATED BRASS BALL**
- Suitable for full range of liquids and gases
- Minimal pressure drop due to large full size ports
- Bottom loaded, pressure retaining stem
- Pressure rated at 600psi (42 bars) WOG (non-shock) and 150 WSP (10.34 bars) saturated steam. Virgin TFE stem packing seal, thrust washer and seats
- Fast 1/4 turn open or close operation
- Low operating torque
- Flow can go both directions
- **Adjustable stem packing gland**
- Maximum operating temperature: 248°F (120°C) at 600psi
- Minimum operating temperature: -20°F (-40°C)
- Each valve individually tested
- Forged Brass—for more strength
- Threaded ends to ANSI B1.20.1
- Hard chromium plated solid ball
- Bottom entry, blow-out proof stem
- **Also available in Steel and Stainless Steel**

200 PSI / WOG BRASS GATE AND SWING CHECK VALVES



GATE VALVE



SWING CHECK VALVE

SIZE	GATE VALVE PART #	SWING CHECK VALVE PART #
1/4"	GVBRD	N/A
3/8"	GVBRF	N/A
1/2"	GVBRH	SWCKVH
3/4"	GVBRL	SWCKVL
1"	GVBR1	SWCKV1
1-1/4"	GVBR1D	SWCKV1D
1-1/2"	GVBR1H	SWCKV1H
2"	GVBR2	SWCKV2
3"	GVBR3	SWCKV3
4"	GVBR4	SWCKV4

*** Call for additional sizes.**

1919 TRACTORS & AG MARKETS SERVED

In 2019, Amazon Hose celebrated 100 years in business. We thought it would be interesting to look back at the tractors used in farming in 1919. Below are different models and styles used by farmers over 100 years ago.



Saunderson



Aultman & Taylor



Ford Model T



Amazon Hose Historic Photos (Above & Below)



Ag Markets
We Serve!

SALES POLICY

Terms

Net 30 day terms are available for accounts approved by our credit department. We reserve the right to withhold shipment to accounts with unpaid balances exceeding 30 days, or, alternatively, to require C.O.D. payment for new purchases until such time as the account is no longer delinquent and credit is reapproved.

Freight

All shipments are F.O.B. Amazon Hose & Rubber warehouses.

Prices

All prices are subjected to change without notice.

Taxes

Applicable sales taxes will be applied on all orders, unless we have customer's exemption certificate on file.

ALL CREDIT TO BE ISSUED AGAINST DEFECTIVE MATERIAL MUST BE AUTHORIZED BY THE MANUFACTURER.

Returned Goods

All merchandise is guaranteed against defects in material and workmanship. Merchandise believed to be defective requires a return authorization form and must be returned prepaid. Freight charges will be refunded if credit is allowed against warranty. Prior approval is required before any merchandise can be returned. Return of non-defective material, or material ordered incorrectly, will be subject to a 25% restocking charge. Cut and/or assembled hose ordered incorrectly **may not** be returned.

Cancellations

On stock material not yet in process, no cancellation charge will apply. On stock material that is in process, a cancellation charge of 25% will be applied. Orders for special or non-stock materials cannot be cancelled.

Technical Data

Various tables and charts may be found on our website www.AmazonHose.com. We offer these as guides and assume no responsibility for their accuracy, as manufacturers may change their specifications without notice.

Special Orders

We require a 50% deposit on all special or non-stock product orders and 100% payment prior to shipping. The deposit payment must be received by Amazon Hose prior to placing the order with our manufacturers.

To apply for credit or open an account, go to www.amazonhose.com/resources/credit-app.

**WE TRAIN OUR
EMPLOYEES TO
BE EXPERTS.**

NOT ORDER TAKERS.

Every front-line Amazon employee must complete NAHAD Safety Training as well as extensive internal training. These programs teach the fundamental qualities of all our products and prepare employees to fulfill every order effectively.

So whether they're answering the phone, working the counter in our AmaZONE in-person service center, or measuring and finishing hoses for custom orders, all employees understand the products they're working with and can provide knowledgeable service at every point in the process.

S

SIZE

INSIDE DIAMETER, LENGTH, OUTSIDE DIAMETER

T

TEMPERATURE

INTERNAL AND EXTERNAL, NORMAL, MINIMUM AND MAXIMUM

A

APPLICATION

WHAT IS THE HOSE SUPPOSED TO DO ON THE EQUIPMENT

M

MATERIAL

WHAT PRODUCT IS BEING CONVEYED

P

PRESSURE

NORMAL WORKING PRESSURE, BURST PRESSURE

E

ENDS

NECESSARY COUPLINGS, TYPE, SIZE AND THREAD

D

DELIVERY

WHEN AND WHERE ARE PRODUCTS NEEDED



/AmazonHose



@Amazon_Hose



2021©

ELITE
DISTRIBUTOR



ORLANDO

4105 Seaboard Rd.
Orlando, FL 32808
(407) 843-8190
(800) 506-5514
Fax: (321) 800-5441

SOUTH ORLANDO

9961 Sidney Hayes Rd.
Orlando, FL 32824
(407) 843-8190
(800) 506-5514
Fax: (321) 800-5441

TAMPA

1103 N. 50th St.
Tampa, FL 33619
(813) 223-7554
(800) 664-9490
Fax: (813) 223-7567

MIAMI

1001 N.W. 159th Dr.
Miami Gardens, FL 33169
(305) 620-4313
(800) 731-0025
Fax: (305) 356-7308

RIVIERA BEACH

6753 Garden Rd. #109
Riviera Beach, FL 33404
(561) 844-3699
(800) 506-5514
Fax: (561) 844-4142

www.AmazonHose.com