

# Pneumatic Solutions

## Common Industry Applications

✓ Aerospace	✓ Life Sciences	✓ Paints & Coatings	✓ Specialty Gases
✓ Agriculture	✓ Marine	✓ Petro/Chemical	✓ Steel Mills
✓ Automotive	✓ Machining	✓ Plastic Molding	✓ Water
✓ Compressed Gases	✓ Mining	✓ Power Generation	- Process
✓ Extrusion	✓ Mobile	✓ Pulp & Paper	- Produced
✓ Food & Beverage	✓ Oil & Gas	✓ Railroad	- Waste
✓ Hydraulics	✓ Packaging	✓ Remediation/Recycling	- Cooling



**amazonhose.com**  
**800.506.5514**

## 1 Air Preparation

### Products:

Soft-Start/Safety Dump Valves	Air Filters	Pressure Regulators
Soft-Start Valves	Filter-Regulators	Lubricators
Air Dryers	On-Off/Lockout valves pneumatic and electrical)	

### Quality Brands:

Norgren	Festo*	Bimba*
Fabco	MFD*	Versa*
Fairchild	Aircel	



## 2 Fittings and Tubing

### Products:

Tube Fittings	Tubing	
Push-in Fittings	Barbed fittings	Threaded Fittings
Couplings	Polyurethane and Polyethylene Tubing	
Specialty tubing – High temp, weld spatter resistant, chemical resistant, hydrolysis resistant, etc		

### Quality Brands:

Festo*	Norgren	Freelin-Wade
Arrow	DK-LOK	



## 3 Valves and Valve Manifolds

### Products:

Stand-alone directional control valves – solenoid and air-piloted		
Mechanical and hand- and foot-operated valves		Flow Control Valves
Multipin Manifolds	Fieldbus Manifolds	Proportional Valves
Process and Media Valves	Pressure Regulating Valves	

### Quality Brands:

Festo*	Norgren	Bimba*
Fabco	Versa*	Clippard*
Norgren/Maxseal	Parker Skinner*	



## 4 Actuators

### Products:

Piston Rod Cylinders	Rodless Cylinders	Rotary Actuators
Tandem and High-force Actuators	Stopper Cylinders	Clamp Cylinders
Guided Cylinders and Thrusters	Custom Application Specific Actuators	

### Quality Brands:

Festo*	Bimba*	Norgren
Fabco	Allenair	Firestone



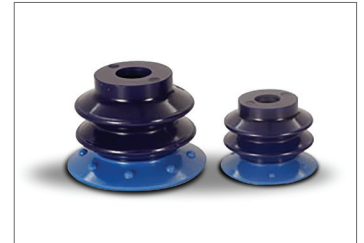
### 5 Vacuum

#### Products:

Vacuum Generators	Vacuum Filters	On-off Valves
Vacuum Cups and Height Compensators		

#### Quality Brands:

Vaccon*	Festo*	Norgren
Bimba*	Anver	



### 6 Sensors

#### Products:

Proximity Sensors	Pressure Sensors	Flow Sensors
Pressure Transmitters	I/P Regulators	

#### Quality Brands:

Festo*	Bimba*	Norgren
Barksdale*	Fairchild	



### 7 Instrumentation and Gauges

#### Products:

Tube Fittings	Tubing	Flow Control
Needle Valve	Relief Valve	

#### Quality Brands:

DK-LOK	Deltrol	UCI
Wika	Noshok	Norgren
Versa*	ITT-Neodyne	



### Questions:

#### Are you using compressed air to control your machines?

- Tell us about your application or the machine you are running.

#### How do you clean, remove moisture, and regulator your air?

- We handle filter, regulator and lubricator products to help remove particulates from the air, remove moisture from the air, and regulator the downstream pressure. If recommended by the product manufacturer, our lubricator products add additional oil to your downstream equipment.

#### How do you control the direction of air flow?

- We handle inline and manifold mounted valves with solenoid, manual, and pilot operated control. We also have connectivity options in Modbus, Fieldbus, serial, and others.

#### What kind of work are you doing with the air?

- We offer pneumatic cylinders (actuators), air motors, grippers, vacuum products, air operated diaphragm pumps, and air springs.

#### How do you connect your pneumatic equipment together?

- We offer a full line of pneumatic tubing and fittings in poly, nylon, and stainless.

#### What kind of environment are you operating in?

- Cleanliness for medical— oxygen clean; Hazardous area — explosion proof solenoids; Temperature (low or high) — we have seals for both
- Material Options — brass, aluminum, stainless steel, ABS

#### Do you need to detect pressure and flow?

- We have pressure transmitters, pressure switches, temperature

### Benefits:

- ✓ Stocking distributor with local support
- ✓ Engineering teams located throughout the country to help select the right product that meets your application
- ✓ Over 30 manufacturers of pneumatic equipment that offer unique solutions
- ✓ A variety of quick-ship options

#### Important Note:

It may be difficult to find a drop-in replacement for certain components, so it is important to verify if a functional equivalent is acceptable in the application.

\*Limited APR